



# OPUNAKE & COASTAL NEWS

Vol. 22 No. 17 September 20, 2012  
www.opunakecoastalnews.co.nz

Published every  
Thursday Fortnight

Phone and Fax 761-7016  
A/H 761-8206  
for Advertising and Editorial  
ISSN 1171-0624

## Inside...

# Cook's first contact with New Zealand

The Puke Ariki Main Exhibition Gallery was packed to hear acclaimed historian Professor/Dame Anne Salmond on Wednesday September 12. The gist of her talk, supported by an excellent audio-visual display (e.g. a excellent picture of Sir Peter Buck and parliamentarian Apirana Ngata), was the first contact with NZ and it's inhabitants between Captain Cook in 1769, sailing in HMS Endeavour, with special emphasis on Sir Joseph Banks (1743-1828) and his associates including Daniel Solander (1733-1782) and artist Sydney Parkinson (1745-1771). Also important was the Polynesian navigator Tupaia (Died 1771), who hailed from Tahiti. "He was an amazing guy". Dame Anne's address was an important adjunct to the exhibition 'Shadowing Venus: Pacific Adventures of Joseph Banks', which continues until November 11.

Dame Anne outlined Cook's first contact with Maoris, which was in the Gis-



Dame/Professor Anne Salmond

borne region. Sadly, Cook's men misinterpreted a Maori custom (a ritual challenge) and there was bloodshed. A Maori man was shot dead. She mentioned other such incidents. "The most disastrous day I have ever seen", lamented Cook, who hated bloodshed. Ultimately Cook would question the wisdom of imperial exploration, such

as he was engaged in. "He was a humane person", concluded Dame Anne.

She also outlined the skills and personalities of Banks, Solander and Parkinson, who were certainly industrious. By the return to England over 800 new plant species had been described, drawn and named. The exhibition even has some original plant

specimens from the expedition such as Kowhai.

She dealt with how some of NZ's more unusual names came about, such as Poverty Bay. Here Cook was unable to obtain fresh water and food - hence the name.

She mentioned the misbehaviour of some sailors, including dalliance with the Maori women. The men were forbidden to give or sell muskets to the Maoris, but this edict was not always upheld.

Near the end of her address Dame Anne drew some conclusions. She stressed that the early Maori-European contact was not as "black and white" as has been often painted. She felt "over-simplification" wasn't helpful. As to the present day she commented, "I don't think we've got equality yet - you only have to look at the statistics".

### The exhibition 'Shadowing Venus: Pacific Adventures of Joseph Banks'

Make sure you make time to see this exhibition.

On display are 46 framed prints from Banks Florilegium, as well as actual samples of kowhai, pohutukawa and kaka beak - over 240 years old! Also to be seen are pictures of Banks, Cook, Solander and Parkinson as well as information about them. There is also a video presentation of how the original copper plates of plant samples, stored away for decades were found and painstakingly processed to provide the exhibits on display.

There are also the original maps of NZ produced by Parkinson using Cook's summary data. There is information of Cook's orders from Admiralty and the Royal Society, which included observing the Transit of Venus from Tahiti and sailing south to search for the Great Southern Continent and how to proceed if this land mass was not located.

Don't miss this unique exhibition, Remember, last day is November 11.



Fire restarts. See page 15.



Positive thoughts make men strong. Billy Graham speaks at Manaia Town Hall. Turn to the centre pages (12 & 13).



Manaia Town Hall featured. Take a look on pages 12-13.

Pharmacy to open in Opunake. Details on Page 5.



Young pianist representing Taranaki in a national competition. A chance to hear her play. Page 24.

## Man arrested



Constable Nigel Dey

A 24 year old Opunake man has been arrested in connection with an incident at Opunake's Club Hotel on Thursday night September 13 and charged with aggravated burglary.

Commented Opunake police constable Nigel Dey, at approximately 8.10pm on Thursday evening, a male was seen waiting outside the side door of the Hotel in Havelock Street. He was wearing blue overalls turned inside out, dark shoes with white strips on them, a cream coloured baseball cap with a dark peak and a dark coloured button on the top, and a dark

coloured bandanna tied over his face. When the bar attendant went to the back of the pokie machine area, the man ran in through the side door, then in behind the bar straight to a cupboard. He grabbed a bag with a significant amount of money in it then ran out of the bar to the street.

He then got onto a pushbike and decamped down Havelock Street towards Opunake Beach.

The man who was arrested on Monday September 17 is currently being held in custody.

Police would like anyone who witnessed the offender standing outside prior to the offence

or what occurred in the bar, to come forward if they have not already been spoken to. We believe the offender who was wearing blue overalls may have been seen by a number of persons as he was standing

outside for a period of time, said Constable Dey.

"It was a very serious offence that could have had serious repercussions if anyone had tried to confront the offender".

## NEW COASTAL MACHINERY SALES REPRESENTATIVE

**PETER LAURENCE**  
PHONE  
027 2477677  
OR  
06 7575582

FOR ALL YOUR  
MACHINERY ENQUIRIES

**NORWOOD** 146 GILL ST,  
FARM MACHINERY CENTRE NEW PLYMOUTH PH (06) 757 5582

Computers • Laptops • Parts • Accessories • Software



**MATT'S COMPUTER SERVICES Limited**  
Computer Sales, repairs, Service, Virus Removal & Upgrades

Ph: Today on 06 2783020 or 0274 219 113  
Open Monday to Friday from 8.30am to 5pm  
Saturday 9am to 1pm  
Or Email: [fixit@matts.co.nz](mailto:fixit@matts.co.nz) | [www.matts.co.nz](http://www.matts.co.nz)  
57 Victoria Street, Hawera



**WE HAVE...**

**Bananas and Oranges**

**\$2.29/kg**

**SIRLOIN**

**\$19.99/kg**

We welcome RD1 and Farmlands Cards

Big enough to be competitive, small enough to care

Open every day 7:30 - 8pm

77 Tasman St, Opunake Ph: 06 761 8668

# EDITORIAL - Slashing benefits

If the Government proceeds with its avowed intention of halving and slashing benefits, the first ones to suffer will be the beneficiaries' children. The aim may be the parents, but significant victims will be the children. Is the Government aware of this inevitable consequence?

Changes to the system may well be desirable, but this is not the way to proceed.

There will be other undesirable consequences of these proposed measures, which will impinge on others in

the community. If a person is totally (or 50%) deprived of their financial livelihood, what exactly are they expected to do? Most beneficiaries are honest people, but one can expect that shoplifting will rise. Certainly domestic violence and, as people descend into desperation, one can expect a rise in suicide attempts and other mental health issues.

All people, are keen for improvements to the welfare system, but leave the soft targets alone. Life for ben-

eficiaries and their families is hard enough.

Behind these proposed measure one detects (perhaps) a degree of prejudice along the lines of - "they don't want to work". However, anyone who has searched for a job recently, at least in Taranaki, knows how hard it is to secure a job - there are simply not enough to go around. One case illustrates this point; one woman, well presented and intelligent, and a university graduate was struggling to even get

an interview, let alone a job. After nearly a year of trying she finally secured a good position - chosen from over 60 fellow applicants.

The Hon Paula Bennett, who seems a caring, decent person and has been a beneficiary herself, needs to take another look at these proposed measures, which can only cause harm both to individuals and society as a whole. However, the idea probably came from elsewhere in Cabinet or Caucus!

Rolland McKellar

Send your your views to  
**"Letters to the Editor"**  
 23 Napier Street, Opunake.,  
 Fax: (06) 761 7016  
 email: editorial@opunakecoastalnews.co.nz  
 You are welcome to use a pseudonym but must supply your name and address.

**TODD ENERGY**  
**Aquatic CENTRE**  
 Family Fun Time  
 10.30am to 4.30pm school holidays  
 Hydroslides • Giant Inflatable • Wave Pool and more!

**AVAILABLE 24/7 FOR CALLOUTS**  
**SINCLAIR ELECTRICAL & REFRIGERATION**  
 Opunake 761 8084 Kaponga 764 6084  
 Okato 752 408 Manaia 274 8084

**MEETINGS:**  
 Sundays at 38 Tayler Street, Eltham at 10.30am.  
 Phone 06 764 7358 for other Bible Studies.  
**Eltham Message Church**  
 Pastor Richard Oliver  
 We are an independent Bible Believing Church  
 All are most welcome  
 www.messgechurch.com

**OPUNAKE & COASTAL NEWS**  
 Registered office: 23 Napier Street, Opunake PO Box 74, Opunake  
 Telephone and Fax: (06) 761-7016 a/h ph: (06) 761-8206  
 e-mail: Advertising ads@opunakecoastalnews.co.nz  
 Editorial editorial@opunakecoastalnews.co.nz  
 Accounts accounts@opunakecoastalnews.co.nz  
 website: www.opunakecoastalnews.co.nz  
 Editor Bernice M'Kellar -  
 Journalists Rolland M'Kellar  
 Kathryn Stanley  
 Delivery: Thursday, fortnightly  
 Registered as a newspaper.  
 Member of the Community Newspapers Association of NZ

The Opunake and Coastal News is distributed free to every home and business within the rural area bounded in the north by the New Plymouth city border, extending east to Egmont Village, and around to the edge of Stratford, south to the Hawera city border and inland to Kaponga and



## Letters to the editor

Dear Editor  
 Rex and Lorraine, Haydn and Bex, and Aaron and Steph Langton offer sincere thanks and appreciation to all those who supported us during our recent 'factory' fire. To the Opunake Volunteer Fire Brigade, thank you for being on the scene so promptly and for going the extra mile by putting

yourselves at risk to save our livestock. To the other volunteer fire brigades in the district who arrived later on, thank you for your efforts. A big thanks must go to all your families as well, who have to cover your absence in such emergencies, so to all the wives who ended up milking that night - thank you very much!  
 A special thanks to our neighbours, John, Irene, Brendan and Jason Bevins,

for rounding up the calves, Justin Dodunski for milking, Carmen and Dean Quinnell for organising dinner, Jenny and Snoz Hamilton for helping clean up the next day, and to all those who have offered their services to help out, it is much appreciated.

The Langton Family

Dear Editor  
 Although you state in your editorial that Basil Chamberlain is entitled to his

views with the subject being the oil industry I cannot find any evidence of his opinion. However, when the subject becomes repetitive he reserves the right to reply to the correspondence in exactly the same way as an editor halts publication of letters to the editor when the subject is being repeated and he considers it must be closed.

L.J.(Hans) Busch

## BBC (Bible Believers Corner)

One of the gifts of God is the ability to speak prayers or prophesy in a language they have never learnt. This

## Tongues

is called speaking in tongues. Unfortunately, and I may get into trouble here, some have made a doctrine about this gift. And that doctrine is false!  
 What the tongues doctrine says is that if you speak in tongues, even if only once in your lifetime, then that is the sign that you have been baptised with God's Holy Ghost. Having been to places like Africa where witch doctors and mediums, who are not in the least Christian, speak in tongues I cannot accept that doctrine.

In Joel 2 v17 God says, "I will pour out my spirit on all flesh."  
 Now, is all flesh saved? That answer has to be no! But it says that God pours out His Spirit, His gifts, on all. He sends the rain on the just and the unjust. So if God gives gifts to everyone then having a gift does not make us born again Christians, it does not mean we have been baptised in His Spirit.  
 In Acts chapter 2 there is the report of the Holy Spirit coming on believers. Yes they

spoke with tongues. Was that the sign of the Holy Ghost? Did that make the people who came rushing to hear what the fuss was about listen and respond to Peter's preaching? No.  
 What shook them was that, although they knew the believers were Galileans, each person heard in their own language. It wasn't what was said that was the miracle it was that the people heard in their own language. It was the hearing that was the miracle. Only God's people can hear God's Word. That is the test of having the Holy Ghost. Jesus rebuked the Scribes and Pharisees. "Why can't you hear my Word?" He asks. "You are of your father the devil." "He that is of God hears God's words. You cannot hear them because you are not of God."  
 Hearing, recognising and acting on God's Word for your day is the sign of having the Holy Ghost.  
 Refs: Acts 2 v1-12; John 8 v43-47

Richard Oliver  
 Pastor Eltham Message Church  
 www.messagechurch.com

**At last an Architect designed home on your site for \$550K\* Total cost Move in!**  
 Why settle for brick & tile?  
 Saunders Architects Tel 06 759 7430  
 \*Other Packages from \$350,000

**BRIAN CRAWFORD CONTRACTING LTD**

- Truck and trailer for general cartage.
- Digger Hire, Tractor-Trailer Hire.
- Race Fines, Tanker Track Metal and Drainage Chip.

**Cultivation**  
 • Ploughing • Rock Crushing • Roller Drill  
 • Undersow or Direct Drill • Levelling  
 • Rotohill- Giant Discing

**Silage**  
 Pit or Stack Silage with Loader Wagons  
 Rolling Stack

**Round Silage Single Wrap**  
 Single bale stacking

**Round Hay, Square Hay Scatter Raking Mowing**

**Hay for Sale**

**NO JOB TOO BIG OR TOO SMALL !!**  
 PHONE/FAX: 06 763-8868  
 MOBILE: 0274 447 482  
 506 NGARIKI ROAD, RD 34, RAHOTU



# What happens next at Everybody's Theatre

On March 8, Opunake's Everybody's Theatre was yellow stickered by the South Taranaki District Council. This means no movies or use of the theatre until the Earthquake Strengthening has been completed. An Engineer has been commissioned and plans are drawn up to complete the structural strengthening. The good news is that our two tenants; Penny's Coastal Café and Dave's Barber Shop are able to continue operating. So it's full steam ahead for them. We can continue to use the front foyer of the theatre for activities as this doesn't have a lot of weight bearing above it.

## So what happens next?

Final Plans are completed and we are now waiting for building consents to proceed with the structural strengthening of Everybodys Theatre. Pub Charity has contributed \$221,000 to cover this first stage of the renovation of our theatre. Kuriger Builders have been contracted to complete this work and will be commencing within the next 2-3 weeks once building consent is received. A summary of the work will entail large steel upright portals placed in the ground at intervals and horizontal steel beams attached in the roof forming a large cage within the building. Smaller horizontal steel beams will be attached along the walls with diagonal steel rods within the roof to complete the bracing. The toilets will be redesigned due to the placement of the upright footings, giving the theatre a disabled access toilet.

Architect, Jenny Goddard has been engaged to assist the committee with making the correct decisions with the ongoing work the Theatre requires, thanks to a \$5,000 donation from Egmont Plains Community Board to assist with this cost. Jenny will provide plans to assist with completing the work that is required once the steel structure is completed. Due to STDC guidelines the theatre walls and ceilings have to be lined with fire rated wall linings. In this process we will be investigating the wiring, lighting, heating and installation of a kitchenette.

In Stage Three our aim is to purchase a new digital projector due to the New Zealand Digital Rollover in 2013-14, this will be the only means available to screen movies. We also wish to replace the upstairs seating, give the stage area a make-over and complete the theatre make over.

## Results from the Feedback Forms

Thank you to the 178 people that filled in a Feedback

Form and returned it to us. With this information we can make the right decision for the Theatre and Opunake.

## What we've been up to lately

The fundraising has been split into three stages. Stage One the Structural Strengthening which is secured. Stage Two and Three will require ongoing fundraising and applications to funding agencies. We plan on raising \$15,000 ourselves which we have over half already.

Fundraising projects so far:

- Garage Sale - \$1950
- A Night at the Races - \$4900
- Surf Highway 45 Four Square Bake Sale - \$440
- Surf Highway 45 Four Square 'Guess the lollies in the jar' \$250
- Egmont Plains Community Board granted \$5000 towards Architect costs.
- Lakeside Lions 'Spud in a Bucket' - Market Day, 24th November
- Market Day Christmas

Goodies Stall- Market Day, 24th November

- A Night at the Races - Friday 4 January - A fun night, keep this date free. Be in first to sponsor a race or the whole evening.
- Scrap Metal Run - pending

We have had support from within the community by way of donations, brick purchases and pledges, but we still need more support, every bit helps.

Please fill in the form below if you are able to donate or pledge money towards the Theatre upgrade.

*Debbie Campbell*  
Chairperson

*Everybody's Theatre Society*

## Buy a Brick or Pledge to Buy a Brick

I/we would like to buy/pledge \_\_\_ brick/s to help raise funds for The Everybody's Theatre Upgrade.

- Gold \$500
- Silver \$100

- Bronze \$25
- Other \$ \_\_\_\_\_

I/we are interested in donating products or services to the Everybody's Theatre Society Inc. that will help with the upgrade. Please phone: \_\_\_\_\_

## Sponsorship

I/we are interested in sponsoring Everybody's Theatre Society Inc. Please ring us so we can talk about it. Please phone \_\_\_\_\_

## Contact details:

Name \_\_\_\_\_

Address \_\_\_\_\_

## Receipt: Yes/No

Cheques can be written out to: Everybody's Trust or money deposited at the TSB Bank. Donations are tax deductible. Weekly automatic payments are great too! TSB Bank Account Details: **Everybody's Trust** TSB Bank Account Number: **15-3952-0379031-00**

**TO  
ADVERTISE  
HERE  
PH: 06 761 7016**

## NOVUS AUTO GLASS

*The Windscreen Repair Experts*

---

**ALL AUTOGLASS REPAIR & REPLACEMENT**

- **MOBILE SERVICE • TARANAKI WIDE**
- **INSURANCE & PRIVATE WORK**
- **CARS, TRUCKS, BUSES.**

# 0800 10 35 35

**70 Hurlstone Drive, New Plymouth**

**www.novus.co.nz**  
**Ph: 06 758 7978**

# kitchens

from humble to stunning

giftware

cookware

**one off**  
gallery & factory

168 waihi road  
hawera 4610  
p - 06 278 4280  
e - paul@oneoff.co.nz

**design ~ manufacture ~ installation**

designs by paul rogers CKDNZ  
your only fully certified kitchen designer  
in south taranaki **NKBA**

*21 years making your dreams a reality*

# furniture

new or restored

## Coastal Welders

027 255 8677  
06 752 8138

Machinery Repairs  
Structural Steel Fabrication  
Cowsheds  
Crane Hire  
Fitting & Turning  
Stainless & Alloy Fabrication  
Large Bed Heavy Press

Keyway cutting & Broaching  
Digital Heavy Duty Lathe  
Turret Punching, Plate Shearing & Notching  
Alloy Welding  
3.5 Ton Crane Truck

We supply bearings, steel, fasteners, chain and general engineering supplies. Also hydraulic hoses, fittings and crimping. We are a local company training local people. Email us at [coastalwelders@xtra.co.nz](mailto:coastalwelders@xtra.co.nz) WAREA

## TRANSPACIFIC INDUSTRIAL SOLUTIONS

Septic Tank Cleaning  
Water Deliveries  
Waste Disposal  
Drain Flushing  
Waterblasting

New Plymouth 06 755 9150  
Hawera 06 272 8725

**WORKSHOPS**

Foxtrot | Waltz | Samba |  
Cha-Cha-Cha | Modern Jive

Hawera Presbyterian Centre  
13 Oct, 9 - 5pm  
\$20pp till 30 Sept, \$30pp after

**CLASSES**

Opunake Town Hall  
Starts 18 Oct 7.30pm  
Every Thursdays  
Contact Maria Cashmore  
027 727 1749

# 1/3

(now)

# 1/3

(in 12 months)

# 1/3

(in 24 months)

0% INTEREST

Take home a new Suzuki KingQuad 400 today for 1/3 deposit (or use your old bike as a trade in), pay a third in 12 months, and the final third in 24 months with 0% interest. LT-F400 and LT-A400 \$10,000rrp, LT-A400F \$12,649rrp. Talk to us today!

**Action Suzuki**  
141 Glover Road Hawera, Phone: 06 278 4160

**SUZUKI KINGQUAD 400**

LT-F400L2 **\$3,442 deposit**  
LT-A400L2 **\$3,442 deposit**  
LT-A400FL2 **\$4,325 deposit**

Way of Life!  
0800 SUZUKI | WWW.SUZUKI.CO.NZ

Offer valid until 31 August 2012. Normal lending criteria apply, ask us for full details and cost. Offer not available in conjunction with any other promotion. Documentation fee \$322, 1/3 deposit, 1/3 in 12 months and the final 1/3 payment in 24 months.



**OPUNAKE PHARMACY**  
*Your coastal community pharmacy*

# New vintage clothes shop

A new business selling vintage clothes has opened in Okato.

Called Brat Hats and Vintage Mash, the business is occupying part of the former TSB Realty office.

The business sells funky kids hats and vintage fashion and accessories and also new clothes. All stock is also available for hire.

"It's a passion," says owner Amy Wade of her interest in clothes and shopping in Op shops which she's had from a teenager.

She explains that vintage is anything older than 30 years - the 50s, 60s and 70s. Retro refers to a copy of another era she continues indicating a 70s art deco long dress which was a copy of the art deco era.

Her personal favourite item in the shop is a skirt and cape ensemble she describes as "60s mod chic" and "more Twiggy" than the end of the 60s, when flower power came into prominence.



Amy Wade outside her new business with daughter Mia who's three.

Amy is soon to travel to London and Paris for a month from October to November on a buying mission and hopes to come back with some European vintage clothing to add to her current stock most of which is from New Zealand though some is from the UK. A lot of it is home-made which means they're original items, says Amy. She has a few labels including the

New Zealand Osti label. Amy says she particularly likes the 50s style which she described as "really glamorous" and feminine.

She also has some interesting fashion books in the shop one of which covered the 60s fashion print. Flicking through it, the transition from the more reserved sober patterns of the early 60s to the increasingly bright and 'out

there' psychedelic colours of the late 60s is apparent.

The 40s era coinciding with the war years was more austere and tended to cover up the body. The 50s clothes saw a move to "very pretty clothes, really feminine, pretty coats," comments Amy.

She counsels people should "dress for your figure" which is easy these days as anything goes.

Amy who has just returned to Okato after ten years says she's enjoying being back.

"I love it, it's paradise," she says. She's particularly relishing the peace and quiet after city life.

And response to her new business has been "so positive" with "lots of people offering their help", she says.

Brat Hats and Vintage Mash is open Wednesday to Friday from 9am till 4pm and on Saturday from 10am till 4pm.

While Amy is overseas the weekday hours may vary but it will definitely be open on Saturday from 10am till 4pm.

**the wardrobe**

**New stock has arrived from Bali, Bangkok, & Australia, with more to come. Colours galore - we have it covered.**

**Ph: 06 764 5010 154 High Street Eltham**

**ZODIAC Signs**

Member of... **NZSDA**  
NEW ZEALAND SIGN & DISPLAY ASSOCIATION (Inc)

- Vehicle Signage
- Building Signage
- Logo Design
- Digital Printing
- Stone Guard Bonnet Protection
- Honours Boards
- For All Your Signage Needs

**PH. 06 278 6224**  
**220 South Road Hawera**

# Pharmacy opening in Opunake

A pharmacy is to open in the old Westpac Bank building in Opunake.

The new Opunake pharmacy which will open in November 1 will be staffed by two pharmacists, Tae Wan Kim who will be the manager, and Rick Kim.

Jin Kim who owns the Oakura Pharmacy and Tae Wan Kim will jointly own the Opunake Pharmacy.

The three pharmacists - though they share the same surname - are not related, just friends. Explains Jin, Kim is a very common surname in Korea and adds that his wife's maiden name was also Kim.

Jin and Tae-Wan both attended pharmacy school in Dunedin and also flatted together. Their parents immigrated to New Zealand from Korea. Jin's parents live in Auckland and Tae-Wan Kim's in Christchurch. The third pharmacist Rick Kim, is trying to get permanent

residency. He and Jin met when Jin founded the Korean Students Association at Otago University.

"Rick was an undergraduate. He was chairperson of the association," explains Jin who will also, initially be at the Opunake Pharmacy once a week. Jin's wife (Minnie) - who is expecting their first baby (Grace) - is also a pharmacist.

Tae-Wan who will be managing the Opunake Pharmacy is "very caring who likes dealing with people," says Jin. If anyone is having any health issues he's happy to help.

Jin sees the role of the pharmacist as a bridge between doctors and patients and believes every town needs a pharmacist which is often the first port of call. Also if there's only one doctor they may need to wait a few days for an appointment. The pharmacist reduces the pressure on the doctors, he says "Many of the people don't need to see a doctor, leaving Doctors to focus people who need their professional help."

Jin feels opening the new pharmacy is a "good opportunity". He approached and subsequently the trustees of the proposed medical centre several months ago and expressed his interest in running a pharmacy attached to the medical centre. He felt however there were lots of issues to be resolved such as land, funding etc.

"The need is now and the new medical centre is some time off."

Jin feels it's important to be opening for summer hence the November 1 opening date.

"We'll be stocking a range of health supplements, specialised skin care, sports products and general gift lines" though the emphasis will be on dispensing and community health issues.

They would be offering the same sort of service as is happening in Oakura which is "working well", said Jin who bought the Oakura Pharmacy November last year after managing the pharmacy for 7 months.

"We're looking forward to becoming part of the community, and meeting the locals" said Jin.

"Opunake residents will not have to experience delay in receiving their medications. They can bring their prescriptions to us, which will be processed in 5 to 10 minutes. If required by the customer, free advice or counselling about your medications from one of the dispensing staff will be given. Also, if you have Subsidy card or Community Services Card, this may reduce your prescription charge to \$3 or no-charge."

For example,



Subsidy Card - you will not pay any for any item, except non subsidised items.



Community Services Card - you will pay \$3.00 for each item from GPs, Specialists, Dentists, except non subsidised items

**Clegg's Funeral Services & Monumentalists**

'Serving all districts'

Mike Clegg MOB: 027 496 9090  
Susan Clegg MOB: 027 441 7039  
Andrew Blanche MOB: 027 496 9045

Office - 24 hrs (06) 278 8088

**IHAIA MOTORS**

for **A GRADE REPAIRS**

- Tyres
- Batteries
- Lubes
- W.O.F
- Panel beating
- Painting
- Farm Bikes
- LPG
- All mechanical repairs
- Insurance work
- Radar Detectors

**AT COMPETITIVE PRICES.**

Tasman St, Opunake  
Ph (06) 761-8502

**BRANDERSON HOMES LTD**

Pre Built Homes

**STOCK HOMES FOR SALE**

- Lancaster Mono 126sq m **Please ring for details**
- Ex Show Home 129sq m **or visit our website.**
- Norwich 70sq m

**The Lancaster (Mono Series)**  
Size: 126 SQ M (4 Bedroom)  
Delivered to a flat site \$161,161 incl GST includes foundation, fully plastered and all kitchen @ bathroom fittings.

37 Hautapu Rd Cambridge  
Email: branderson.homes@xtra.co.nz  
0800 PR BILT (0800 77 2458)  
Ph 07 827 3901  
Website: www.brandersonhomes.co.nz

Please send us an information pack about your Transportable Pre-Built Homes

Name .....  
Address .....  
Phone ..... Style/size .....

Mail to: Branderson Pre-Built Homes  
PO Box 434, Cambridge

Hi everyone sorry it has been awhile since the last article.

As you may have seen or heard we held a very special celebration at the fire station recently; con-

gratulations to Beau LeProu and Kevin Joyce on such an amazing achievement of 25 years service to our local community. With daylight savings fast approaching, and hope-

fully the better weather, it's always a good time to test and change the batteries in your smoke alarms.

If you don't have smoke alarms in the house this is also a

good time to get some.

*Callouts since 1st of August:*

1st of August, we were called to the Opunake Cemetery where a leaking LPG cylinder

had caused a car fire.

11th of August, we were called to assist Kapinga with a hedge fire in Awatuna.

29th of August, we were called to a trac-

tor fire in a building on Arawhata Road.

29th of August, we were called to the old factory on Arawhata road that was well ablaze on arrival.

## COUNCILLORS COMMENT

What's in a name? In terms of our identity as coastal communities, it's a very valid question. While I'm not about to ask any one of you to "deny thy father and refute thy name," I am asking you to think about the wide geographical area currently known in local government, (ie. the South Taranaki District Council) as the Egmont Plains Ward.

Let's face it, it's been a long time since the amalgamations of the Waimate

West and Egmont County Councils, but the hangover of that somewhat stressful and painful time for our communities is that, in many people's opinions, we are left with a name that really doesn't reflect us at all.

Stretching from Inaha, south of Manaia, right around the coast to Puniho, we who live anywhere between these boundaries are all lumped together under a banner that really doesn't do justice to our beautiful area and our

wonderful people who live everywhere from the sea to the mountain.

Ahhh yes, the mountain, the iconic symbol of our province. The source of our identity and yet at the same time the cause of our anonymity. It's not hard to know exactly where our fellow South Taranaki citizens come from; Patea, Tangahoe, Eltham and Hawera. But Egmont Plains? Seriously? With a name like that we could be from any part of the province. With a

name like that we could actually belong to a few organisations or places in Europe too. But we don't.

Who are we really and who was Egmont anyway? Now before anyone gets uptight and assumes I'm suggesting we switch Egmont for Taranaki in our name can take a breath and keep reading. That's a whole other discussion and not one that's relevant to my point today.

What I am asking is how should we truly reflect the

many different communities that our ward encompasses - from Puniho to Inaha and inland to the mountain? We are many and each of us are unique. Manaia is not Rahotu, Inaha is not Opunake and Otakeho is not Pungarehu or Parihaka or Auroa or any of the other many settlements that define our people, our ward.

Council recently voted to retain the status quo, but the choice is still really up to us. Let's not remain attached to

Egmont Plains for attachment's sake. Remember, "that which we call a rose by any other name would smell as sweet."

Puniko ki Inaha - Puniho to Inaha. That's who we are.

What do you think? I'd be interested to read your thoughts so email me on [b.bigham.stdc@gmail.com](mailto:b.bigham.stdc@gmail.com)

or call in to see me at the Manaia and Opunake Libraries every second Tuesday (which is next week). Mauri ora, good health to all.

### INTRODUCTION TO SPIRITUAL DEVELOPMENT

With Lisa Lister and Ceris Morgan Hart

This is a chance, for you, to learn about and develop your own natural psychic abilities. Come for one or both days - on each day there will be something different for you to learn...

**Day 1 - Sat 10th November 2012 from 10am - 5pm**

An insight into Mother/Father God, and Self Awareness...

\$150 investment

**Day 2 - Sun 11th November 2012 from 1pm - 5pm**

Introduction to psychic healing - \$80 investment

Please register your interest by Ph/Txt to

Lisa Lister 027 563 2828 or Ceris Morgan Hart 027 461 6113

## CREATIVE STONE

Our website has over 150 Memorials pictured on the gallery pages to give you plenty of ideas for the Monument you require.

Sea Grey Adults upright Stone & Base

\$1250.00 Inc GST - Conditions Apply

Restoration work available on request

All our memorials come with competitive pricing and friendly personal service

Open 12pm-4pm Tuesday to Thursday 11am-3pm Friday

[www.creativestone.co.nz](http://www.creativestone.co.nz)

567 Devon St West

Blagdon Shopping Centre

Ph 06 751 2177



## Students top Taranaki



From left, Suzy Le Fleming, Ellie Hodder, Eva Langton, Katie Brewer and Bree-Anna Langton.

Students from St Mary's Diocesan School, Stratford have topped Taranaki.

Recently Speech NZ Speech and Drama Examinations were held in Tarana-

ki and St Mary's Diocesan School topped the region. Ellen Hodder, 14, received

an 'Honours Plus' mark for her Grade Six Examination and has also been nominated for the prestigious Melda Townsley award in Excellence in the Use of Language and Expression. Fellow student Eva Langton, 13, also received an 'Honours Plus' mark for her Grade 5 Examination having only commenced lessons since the start of 2012.

Teacher, Tracey Blake says, "It is outstanding for our girls to have national recognition at this level. They strive for excellence here at St Mary's and we have fun in the process."

Other results for St Mary's Diocesan are as follows: Grade 5: Suzy Le Fleming, Merit; Katie Brewer, Credit; Grade 7: Bree-Anna Langton, Credit Plus.

## Maths matters at St Mary's



The students proudly display their quilt of many colours.

What a busy and successful term the Mathematics department has had at St Mary's! The annual Taranaki Methanex Maths Spectacular competition was held last month and once again St Mary's had a number of prize and award winners.

Congratulations to the Year 9 Maths Quiz team of Megan George, Edie Thomas,

Dori Collings-Hughes and Sarah Carter who came second out of a total of twenty three teams from around Taranaki.

The St Mary's Year 10 Fabric Technology class were awarded first place in the Group Project with their 'mathematical quilt'. They are delighted to be donating this to the Children's Ward

of Taranaki Base Hospital.

Sarah Carter (Year 9) won first place in the IT section with an individual project 'Maths of the Universe'.

Caitlin Haire (Year 10) won first prize in the 3 dimensional artwork section with her exquisite folded flowers.

Bridget Mestron (Year 10) was awarded second place with a hand drawn 2D artwork of diamonds.

Their teacher Mrs Lisa Dent was thrilled with the results

and said, "Students will continue to build a strong mathematical foundation here at St Mary's. They are also encouraged to take up the many mathematical challenges that are offered outside the classroom learning environment, such as the Mathanex Maths Spectacular, to broaden their mathematical learning experiences."

## Washer & Co

0800 4 SPILT MILK

0800 4774586

or 0800 292743

*Serving you without fail  
for the past 15 years*

**Yes, we are collecting colostrum now!**

**20 cents a litre plus GST**

**Also collecting Penicillin Milk NOW**

**10 cents a litre plus GST**

*We offer*

1. Prompt Payment
2. Collecting around the clock
3. Confidentiality guaranteed
4. No detergent please.
5. Here for the next 4 months

**WASHER & CO LTD**  
**Rahotu or Oakura**

**For advertising  
phone  
(06) 761 7016**

# Gorgeous Gowns and well suited young men



Last Saturday night Opunake High School had their annual ball. Here are some of the shots taken on the night.



## Citylink bus travel free for two days

Commuters and shoppers will be able to ride New Plymouth Citylink buses for free on Thursday and Friday (20 and 21 September). The zero-fare days coincide with World Car-Free Day and are designed to thank regulars for their support and to encourage others to try out the buses.

Citylink Routes 1-9 and Route 20 (Bell Block-Waitara) and Route 40 (Oakura). School-bus services are not included. Citylink services are operated by Tranzit Coachlines under contract to the Taranaki Regional Council, which says it wants to thank regular passengers for their support and constructive

suggestions in a recent online survey. "We got more than 200 responses and they revealed a high level of satisfaction with the Citylink service, its convenience and the professionalism of Tranzit staff," says the Council's Passenger Services Officer, Chis Clarke. "That verdict is very pleas-

ing after the work that went into revamping and expanding the Citylink service two years ago," he says. "Patronage is growing steadily and we're hoping the zero-fare days will encourage even more people to try the bus. Timetables are available at Puke Ariki, New Plymouth District libraries and online ([www.taranakibus.info](http://www.taranakibus.info))."

### Opunake Swimming Baths

Public 1-4pm weekends, 3.30-5pm Tuesdays

**Earlybird Lane Swimming**

6.30 - 8.30am Mon-Fri

**Aqua Aerobics**

9am and 6.30pm Tuesdays & Thursdays

5.30pm Wednesdays

6.30pm Mondays

**Night time fitness**

Sun 4-6pm

Lanes available during aqua aerobics

**Entry Fees**

\$2 student & senior \$3 adult

12 swim tickets for \$20 & \$30

Full Season Concession tickets \$200 and \$300.

Pool 761 7175 Enquiries 761 8052 or 761 8382

## \$2000 for Rape Crisis

Two thousand dollars was granted to Hawera Rape Crisis from the Egmont Plains Local Discretionary Fund at the last Egmont Plains Community Board meeting held on August 22. The money is to be used for family violence follow-up and support work in the Manaia, Opunake and Coastal area.

Stephanie Walden who addressed the Board on the organisation's behalf had asked for \$5460.

"Being a local girl from Rahotu, I'm very passionate about the project," she said. "There's a huge demand," she said adding they did 150 visits a year and 700 a year clocking up 7200 km.

The project aims to follow up all of the police callouts in South Taranaki to offer services to both the victim and the offender.

They had already received funding of \$50,000, the amount applied for represented a shortfall in their expenses.

Community Board member Brian Vincent, in response to her address, commented that he wondered what the Government view is referring to whether they should be Government funded.

"There isn't the money there," she responded.

The applicant has also applied to the Hawera Community Board at their August meeting for \$5460 towards travel costs for the South Taranaki/Hawera area.

An application for \$1700 to resurface the toilet floor and add a new window to

the Manaia Golf Club was turned down by the Egmont Plains Community Board.

Community Board Chair Sharon Arlidge noted that the club "made a substantial profit," and recommended it be declined. It was noted that they were given \$700 in February towards painting the clubhouse exterior.

Board member Brian Vincent however felt the facility was also a public convenience.

Craig Dingle however felt that a letter should be written in support of the club though the application was declined.

### BROPHY BUILDERS

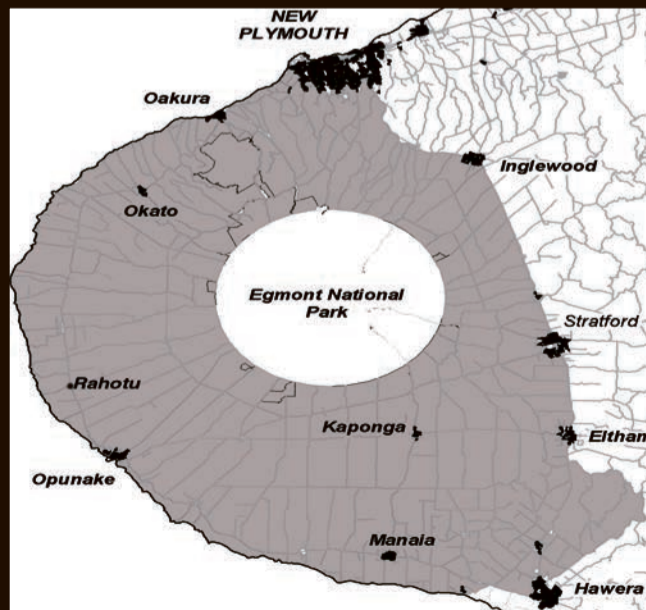
For new homes, roofing, alterations, kitchens, decks and all farm buildings.

For all your building requirements phone Phil

6190 South Road, RD 35, Pungarehu

027 236 7129 or (06) 763-8777 a/h

## WANT TO DO BUSINESS IN OUR AREA? TALK TO US



Opunake and Coastal News is distributed free to every home and business within the rural area, bounded in the north by the New Plymouth city border, extending east to Egmont Village, and around to the edge of Stratford, south to the Hawera city border and inland to Kaponga and through Eltham.

We are an independent newspaper based in Opunake, which is targeting both the towns and rural communities and we aim to have news coverage within all the areas of our distribution.

We want to be involved with your business call today and discuss your marketing options with the team.

COVERING THE COAST

Promote your business or event in our area call us on (06) 761-7016

OPUNAKE & COASTAL NEWS

• 23 Napier St, Opunake • Ph/Fax 761-7016 • email: ads@opunakecoastalnews.co.nz



**Jonathan Young**  
MP FOR NEW PLYMOUTH

NEW PLYMOUTH OFFICE  
Corner of Lizardet and Gill Street  
Office hours: 9am - 4.30pm Mon- Fri  
P: 06 759 1363 | F: 06 759 1364  
E: newplymouthmp@parliament.govt.nz

**National**  
www.national.org.nz

**Meads Motorcycle Repairs**  
9 Main South Road Manaia  
Ph 06 274 8216 Mobile 027 2104673



**For all Your Farm Bike Needs**

## CAPE & KC ENGINEERING

ALL OF YOUR GENERAL ENGINEERING NEEDS

\* Welding \* Cow Sheds \* Lathe Work  
\* Trailers to Suit

**Chris Shingleton**

P: 06 763 8878 M: 027 660 8612  
6358 Main Road Pungarehu

## Coastal Agri Services

Tasman Street - Opunake

Providers of Effluent Systems.  
Specialising in design.

**Pumps and Stirrers**  
Electric or PTO Driven.

\* Ponds \* Irrigators \* Seperators  
\* Sand traps & Water diverters

**24-Hour-Service--7-Days-a-Week**

Phone or call in to discuss  
your system anytime  
Ph 06 761 7079

## LAWYERS Thomson O'Neil & Co.

Our Opunake Office is attended by:

**Robert England** on **Wednesday** and **Fridays**,  
for buying and selling Houses, Farms and Businesses;  
Trusts; Wills and Estates.

**Neal Harding** on **Thursday**, for Residential Sales and  
Purchases; Family, District, and Criminal Court matters;  
Civil and Business matters.

FOR ALL YOUR LEGAL REQUIREMENTS

**30 Tasman Street,  
Opunake  
Ph: 761-8823**

# Beneficiary Bill just more dog and pony



Andrew Little, List MP

If you were running a country where nearly 200,000 people were out of work, more than quarter of a million were living in poverty and where incomes for more than half the population had fallen in the last three years, would your priority be to boost economic performance so jobs could be generated

and incomes rise? Or would your priority be to find ways to penalise about 10,000 people on a benefit to save some money?

The government has made its choice. It doesn't want to help people into jobs. It would rather punish people.

The announcement last week of the results of a study that showed the "lifetime cost" of welfare as \$78 billion was the most cynical exercise we have seen out of this government in a long time. It was nothing to do with good economic management, and everything to do with tainting those on a benefit: "Look how much you cost us".

Not only is the idea of a "lifetime cost" of welfare totally meaningless as an idea, you and every other taxpayer stumped up more

than a million dollars to some Australian consultants for the whole dog and pony show.

The study said if you take everyone who was on a benefit (apart from national superannuation) in the year up to June 2011, and they stayed on their benefit for the rest of their lives, then after the last of them had died or reached retirement age in about 47 years from now, the cost would be \$78 billion.

Put aside the obvious question about why you would make this calculation when unemployment is at its highest in 12 years, the main issue is that not everyone stays on a benefit for the rest of their lives or 47 years (whichever comes first).

Numbers on the unemployment benefit are directly related to the state of the

economy. And people on the DPB usually move off it after a short number of years. Sick-ness and invalid beneficiaries have the longest time on their benefits because that's the nature of their benefit.

The government has handily come up with a big dollar figure that we can be sure will be trotted out frequently as proof there is a crisis. It is total rubbish.

The pity of it is that it allows the government to avoid the real challenge of getting people off benefits as a result of a thriving economy and plenty of jobs. That, apparently, is in the too hard basket.

So, watch out for the lash. You could be next!

*Andrew Little MP*

## Stockwhips and Weetbix



Hon Chester Borrows

When I pulled up in front of Ngamatapouri School recently, I was met with half a dozen boys standing around before school. They were 'chewing the fat' the way boys do in expectation that they will soon be men. The topic for the day was stock whips. There were at least three or four experts in the group and the valley echoed the reports of their whip cracking around the folds of the back country.

When all the kids were inside, there were sixteen pairs of red band gum boots, in descending order, by the front door and everyone was ready for work. Then we 'chewed the fat', or at least we cross-examined each other.

They told me that when they weren't in school they were either riding ponies, building huts, eeling, hunting, on the farm or in the river. Not a single word about television or an Xbox.

I then tried to explain how my world as a Member of Parliament could possibly be relevant to their way of life, but I'm not sure that I was all that convincing.

On a previous visit, when the children had been studying Parliament as part of a social studies unit, the students grilled me with their carefully crafted questions. One, from a five year old new entrant was, "Does he get mud on his gumboots when he goes pig huntin'?" I'm not sure he was that impressed.

The kids are impressive and personalities in their own right. No doubt there is a pecking order, it's the nature of groups, but everybody is allowed to be unique; have their special talents and are given the space to exhibit them. Of the sixteen children, two had won age-grade cross country races at their inter-schools competition the week before and I was left with no doubt about that when they ran three laps to the top of the hill behind the

school before work started for the day proper.

The staff is an impressive bunch too and there is obvious passion and commitment to teaching and learning, an expectation of and reward for effort.

When I visit schools across the electorate I often find good things going on with only the rare exception. Parents are enjoying knowing how their children are doing, not only socially but academically. In most schools they are encouraged to come in and talk to teachers about how their child is doing. Out in the community, comparisons are made between children and their achievements on the sports field, in the school play and in exams and end of year results. These comparisons flow liberally comparing schools and teachers too. They are made justly and unjustly; not everybody is an expert, but they are 'customers' of the school and the Ministry of Education generally, and have the right to hold a view.

Although teacher unions may not like to admit it, schools have been cajoled into more in-depth and transparent reporting to students and parents since National

started agitating for National Standards. Over recent years that level of reporting has increased markedly.

Yet this weekend the Labour Party has promised to wind that reporting back if elected at the next election. Some schools put on food for kids who need it, but Labour have promised to give children Weetbix at the beginning of the day, like it or not and regardless of whether the children have had breakfast before they come to school.

I wonder if David Shearer has ever been pig hunting or cracked a stock whip, and what has he had for breakfast? I wonder what the kids at Ngamatapouri would think of that? They have a better chance of knowing how many sheep their farm runs to the hectare, the expected lambing percentage, what they'll get at the works for them and how many jobs that will create at the Waitotara meat works. That is maths, science and home economics in their very real world.

*Chester Borrows*  
MP for Whanganui  
021 7226 36

## On this month in history

On September, 1867 a law was enacted providing four Maori electorates or seats in the New Zealand Parliament. The North Island was allocated three seats, while

the South Island just one. This was a reflection of the population numbers of Maori people in each island.

At the time to be able to vote you had to have

property if you were European. However, the Maori roll allowed indigenous people the right to vote without the same property qualification.

Europeans or Pakehas

had to wait another 14 years to be able to vote without having to satisfy a property qualification.

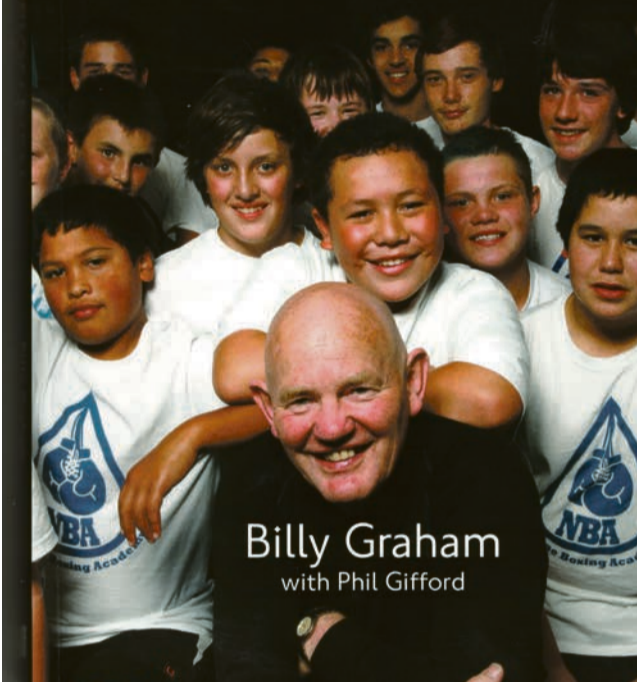
Women had to wait until 1893 to be allowed to vote in this country.



# Making Champion Men: How one inspirational man is making a positive impact

## Making CHAMPION MEN

How one New Zealand man's vision is changing boys' lives



Billy Graham with Phil Gifford

grounds, a boulder represents each of 50 odd well-known boxing champions such as Floyd Patterson (his hero), Muhammed Ali and the late Joe Frazier, complete with legend and paintings of each man on each. The Academy is run by the Naenae Charitable Trust.

The book has a chapter on such problems as bullying, the need to eat healthy food,

and a section on positive rules for living effectively 'a passport for success'. The book is a valuable blend of autobiography and personal growth. I thoroughly recommend the book, especially for parents and caregivers who have children who are at risk of showing sign of heading the wrong way.

*Rolland McKellar*

### Stop press: book launch on Tuesday Sept 25

The official launch of this, Billy Graham's second book, will be held on September 25 at the Naenae Boxing Academy, on the corner of Treadwell and Sladden Streets, Naenae, Lower Hutt, Wellington. The function starts at 6.30pm and will last for about an hour.

Special guests include Phil Gifford (co-author) and Judge Andrew Becroft, Principal Youth Court Judge of New Zealand, who wrote the *forward* to the book.

Of course, Billy and his team of boxers will also be there. Its a good chance to have a good look at the Naenae Boxing Academy in all its glory and see the many photographs of the boxing greats of the past and present, such as Floyd Patterson and Muhammed Ali.

If you would like to attend this special occasion you can phone Kerri Graham on 04 527 4227 or email your intentions to [kerri@teambilly.co.nz](mailto:kerri@teambilly.co.nz)

**Making Champion Men: How one man's vision is changing boys' lives - book review**

*Author Billy Graham with Phil Gifford. Published by Hodder Moe, Auckland (2012).*

This is the story of how William Neil Graham – best known as Billy Graham – managed to put a unfortunate childhood behind him to become a New Zealand (and Australasian) champion boxer, a renowned motivational speaker and fulfil his life's ambition to own his own boxing gym (Naenae Boxing Academy). He has also managed to turn around the lives of young delinquents and guide them towards becoming worthwhile 'champion' men. "Young men's lives are changed here. Boys have entered with nothing: hungry, no self-belief, little hope. But have left as confident young men looking forward to the future" (back cover).

The book is well-supplied with intriguing photographs, including his Naenae Boxing Academy, the NZ champions he has trained (including his own son David), Muhammed Ali's childhood home and notable visitors such as Sir John Walker.

He is understandably proud of his Academy and has definite rules as to courtesy and language – swearing is strictly banned. He has the ropes and ring which encircled Muhammed Ali (Cassius Clay) as he sparred with Joe Bugner

on a 1979 NZ visit. Outside, around the perimeter of the

# DO YOU WANTED TOUGH AND RELIABLE FEED EQUIPMENT



### Forage Wagons

Developed over 40 years, these wagons are the ultimate for performance and reliability.

- Side and Centre Feed wagons available, 9-21m<sup>3</sup> capacity
- Hydraulics incorporate feed sensing, speed adjustment, feed rate control and more
- Customise to suit you – wireless scales, feed rate control system, bin feeding options



### Bale Feeders

Strong, reliable and great value for money, giving you a very even spread.

- Capable of handling round or square bales of hay or silage
- Low centre of gravity, perfect for hill feeding
- Linkage machine can be driven at either end which reduces tractor movement and saves time
- Trailed machine has a fully controlled loading system



## Your Giltrap Sales & Service Dealer

CLAAS Harvest Centre Taranaki  
289 Waihi Road, Hawera 4640  
Peter Marshall 027 279 7099  
Steve Roylance 021 287 5335

**CLAAS**  
Harvest Centre

## We've got the lot!



- Prompt On-Farm Call Out Service
- Fitting & Balancing
- Tractor, Truck & Motorbike
- Wheel Alignment
- FREE Tyre Safety Checks
- General Tyre repairs

**ADVANTAGE**  
THE TYRE PROFESSIONALS

**Dean Cameron's Tyre Centre**

BROADWAY SOUTH • STRATFORD • 765 8401 • 021 061 3895

## COLOURplus

### versatile

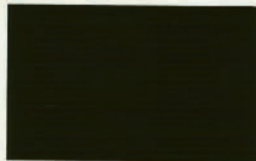
A multi-purpose acrylic paint, enhanced with linseed oil



Ideal for homes, farm buildings, factories, sheds, garages, gates, fences, posts, roofs, spouting, fascias, barge boards etc.

4 litre  
**\$69**

10 Litre  
**\$129**



Black



White



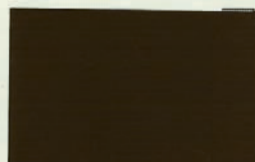
Winter Grey



Barn Red



Forest Green



Farmer Brown



**Morris & Ockhuysen Colourplus**  
31 Tasman Street, Opunake  
Phone 06 761 8047  
Fax 06 761 7041



# Too good to miss

Making a move to Opunake? You may be a farmer ready to move into town? Or have a young or not so family and tired of paying rent? Or you would like to work from home? We have loved living in Opunake for almost 14 years, but it is time for us to downsize and move closer to family.

Our home has an established garden with potatoes planted that will be ready by Christmas. Lots of other vegetables as well as strawberries are flourishing. There is also a small orchard with a grapevine and apple, feijoa, grapefruit and lemon trees. The latter is currently laden. What more could you

wish for?

The house has palisade cladding, so no painting, aluminium joinery and a decramastic tiled roof.

The house has three double bedrooms, two living areas, a modern kitchen, with ceramic top stove, and bathroom with an extra toilet off the laundry. There is a log fire, a Rinnai gas heater, Infinity gas water heating and an HRV ventilating system. A small conservatory gets all day sun and adjoins to a covered outside entertaining area.

**But wait there is more!**

A large four car garage with two automatic door openers and still room for a workshop is every man's dream. This property also has a sleepout, and wood and potting sheds. The section is



A generous living area .

also fully fenced. There are phone connections in both the garage and the sleepout.

If you don't believe all of

the above then please ring Rose or Bob at 761 7373. to check it out.

It may be viewed at #9870

on [www.homesell.co.nz](http://www.homesell.co.nz) or [www.trademe.co.nz](http://www.trademe.co.nz)

See 'Property For sale' Classifieds for Open Home



**At Opunake Swimming Pool  
AQUATOTS, PRESCHOOLERS  
SCHOOL CHILDREN  
SWIMMING LESSONS**

**BEGIN OCTOBER 16<sup>TH</sup>  
REGISTER NOW**

Contact Sue Pegrume  
761-8172



## Rahotu Panel & Paint (Old Rahotu Dairy Factory)

- Crash Repairs
- Rust Repairs
- Rustproofing
- Dents Removed
- Light engineering
- Batteries.
- Trailer Hire x 2 6 x 4 & Tandem Car Trailer
- Insurance Claims
- Windscreens Replaced
- Car Painting Specialist
- Plastic Welding
- Restoration Work
- Fibreglassing

**Stuart Cadman**  
Ph (06) 763 8462 A/h 761 8190



ABOVE: The sleepout and at RIGHT: An immaculate, low maintenance, comfortable home.



## Slogan ideas for Opunake

Progress Opunake- The Opunake & Districts Business Association received an overwhelming response to their slogan competition for

Opunake! Here are the four finalists! Please pick one and either e-mail them to [sin-clairelect@xtra.co.nz](mailto:sin-clairelect@xtra.co.nz) or drop

them into Sinclair Electrical & Refrigeration Ltd before 1<sup>st</sup> Nov! The winner of the slogan competition receives

a \$50 Opunake Business Association voucher.

**Opunake-mountains, sun, murals, surf!**  
**Opunake, the most on the coast!**  
**Small town, big ambitions!**  
**Opunake-Jewel of the Naki!**

## Busy spell for Pihama WI

It is some time since you have heard of the activities of the Pihama Women's Institute, but in fact we have been very proactive. We had a very good attendance to hear Katrina Turner speak of her improved health after receiving a double lung transplant and her work with cystic fibrosis. A very successful pot luck dinner to welcome new residents was held in June. It is pleasing to see the next generation of youth returning to Pihama. A very profitable cake auction was held to boost our funds, and the grocery raffle raised \$205.00 which has gone to 'Kidney Kids' our National Project for this year. At our last meeting Graham Lynch spoke about the latest in security systems and neighbourhood watch. A date to remember, Friday 16 November, the community is going to celebrate what would have been Pihama School's 125<sup>th</sup> jubilee. More info to follow.

Publicity Officer



**WANTED  
25 PEOPLE**  
to trial\* the latest  
100% Water Resistant  
Hearing Aid

*Now I can relax in my work  
and comfortably hear all the  
sounds around me.*

\*Conditions apply



sleek, discreet design

At **Central Audiology Taranaki** our modern hearing aids are designed for people with active lives. Now you can relax knowing the most advanced hearing aid on the market is impervious to water as well as perspiration.

HydraShield technology features a moisture protection system that integrates nano-coating, unibody construction and smart component placement. The result? A hearing aid uniquely designed to have superior water resistance inside and out.

**\$1022  
hearing aid  
subsidy  
available**  
Conditions apply

Free hearing screening test : Free demonstration



Call Central Audiology Taranaki (to reserve an appointment)  
58 Fulford St, New Plymouth  
Ph: 06 757 3435



### 47A King Street, Opunake A SUNNY LOCATION

A great location so close to the Village. This two bedroom town house has heaps of potential but in need of a makeover throughout, your opportunity to make it your own.

Call today to view!

Asking Price: \$179,000 RV: \$205,000



Viv Scott  
O: 764 8835  
M: 0274 414 596  
[viv.scott@eieio.co.nz](mailto:viv.scott@eieio.co.nz)



## Their Home Away From Home



When you are booking your family holiday remember to make sure your pets are cared for while you are away.

**BOOK NOW - HOLIDAY SPACES FILLING FAST.**

Email bookings available

**150 MANGAPOUA ROAD, RD 13 HAWERA**  
Phone 06 278 8458

Open Hours: 9am-11am and 4-6pm 7 days

Email: [flax.cottage@xtra.co.nz](mailto:flax.cottage@xtra.co.nz) [www.flaxcottage.co.nz](http://www.flaxcottage.co.nz)



# Opunake High School

## Te Kura Tuarua o Opunake

### 2012

*'Growing good people for a rapidly changing world'*  
"He waihangatanga o te tangata pai i roto i tenei ao hurihuri"

#### BILLY GRAHAM

Billy captured the attention of every single person with his dynamic presence and infectious humour. While we were laughing, Billy assailed us with his home-grown wisdom. He deals in simple truths that hit home and stay with you, well beyond your audience with him.

He stressed the importance of combining a healthy body with a healthy attitude and making the best of every opportunity. Students listened to a "big kid" who has "made it". Billy challenged them with audience participation, and encouraged them to "give it a go". He emphasises listening skills, manners, and courage.

Billy loves people and delights in sharing his zest for living with others, whether they are business executives or school children.

Thank you STDC for bringing Billy to Opunake.



Billy Graham demonstrating to Reid McAlister a task to perform.

#### DELISH DREAM RESTAURANT



Patrons were served with a tantalizing and exciting menu by the Yr 11,12,13 Hospitality Class on Sept 12 & 13, at their Delish Dream Restaurant. Students gained the experience to prepare and serve customers in a real restaurant environment.

The Menu consisted of:  
Entrées—Chilli Salmon, Caesar Salad, Roast Pumpkin Soup and Garlic Bread  
Main—Rack of Lamb, Chicken Breast  
Dessert—Chocolate Cake, Mini Pavlova, Berry Cheesecake.



#### STDC VOLUNTEER AWARD

This week three of our staff were awarded Volunteer Recognition Awards from STDC for efforts beyond the call of duty by individuals or groups. Matt Lash as volunteer individual award for his outstanding efforts with the Hillary Challenge Team.

Murray Weir and Harry James received an award for community involvement with their contribution to Opunake Board Riders.

Congratulations— we are proud to have them in our community.

#### RUGBY PRIZEGIVING

Congratulations to the players, coaches and managers for their outstanding efforts for 2012.

##### 1st XV

Jamie Fevre

Simon Mullin

Jamie Fevre

Leighton Read

Taine Rothe

##### Under 15s

Matt Hooper

Cjihad Thomas-Moore

Ben Marriott, Hamish Kape

Mike Winter

Mike Winter, Dylan Fevre

Blayde Crawford

##### Player of the Year

Fleming Julian Cup

##### Most Improved Player

OHS/Soffe Cup

##### Captain

OHS/Clement Cup

##### Most Promising

CRFC/Hislop Trophy

##### Best Team Member

CRFC/Bernie & Marga ret Fleming Trophy

##### Player of the Year

OHS/Fleming Julian

##### Most Promising

Rangi Ngaia & Bernie Fleming Trophy

##### Captains

##### Most Improved Player

##### Best Team Member



Leighton Reid, Benjamin Marriott, Jamie Fevre and Matt Hooper with their awards.

#### Yr 13 OUTDOOR EDUCATION

This year's 13OED Cycle Trip started out near Ohura and took in the sights of Whangamomona, Te Wera, Inglewood and Stratford on route to Opunake. The fluoro orange group flew over the eastern saddles and made light work of the gale force head winds that blew for two days- a unique trip that covered some 160 kms of pristine Taranaki asphalt!



#### OHS WILLY WONKA BALL

Senior students attended Opunake High Schools Ball on Saturday September 15. The theme of the night was Willy Wonka, which meant a bounty of sweets and desserts.



Simon Berndt as Willy Wonka and Senior Students.



#### SAMOA SPORTING & CULTURAL TOUR

11<sup>th</sup> - 19<sup>th</sup> July 2013

*Opunake High School rugby and netball teams are travelling to Samoa for a sporting & cultural tour!!*  
**Look out for our events and please come and support us !!**

#### Upcoming fundraisers:

##### Quiz

Thursday 25<sup>th</sup> October 7-9pm @ OHS Hall \$10 per person – 6 people in a team – Supper provided & cakes for auction!

##### Hangi

Saturday 22<sup>nd</sup> September \$8 each (ring the school office for tickets or see a student on the tour)

##### Garden Chairs

Made by students \$170 each or 2 for \$300

##### Firewood

Orders are being taken for next year's delivery - for a cubic meter: \$50 for pine,\$57 for mac

**We have young, fit students who are keen to earn personal money to help cover costs for their trip – if anyone has any jobs available please ring the school office on 761 8723.**

**OHS is taking enrolments for 2013.**

**Please ring the office to make an appointment.**

#### SPECIAL DATES TERM 4

- |               |                     |
|---------------|---------------------|
| September 28  | Last day of Term 3  |
| October 15    | Beginning of Term 4 |
| October 18-24 | Senior School Exams |
| November 8    | Senior Prize giving |
| November 12   | NCEA Exams Commence |
| December 7    | Junior Prize giving |

Phone: 06 761 8723  
Fax: 06 761 7262  
Email: [admin@opunake.school.nz](mailto:admin@opunake.school.nz)

Web: [www.opunake.school.nz](http://www.opunake.school.nz)



**Proudly supporting the Opunake community for more than 30 years.**

[www.stos.co.nz](http://www.stos.co.nz)



# MANAIA TOWN

## Manaia Town Hall is greatly appreciated



The Manaia Town Hall is a real asset to the community and is used by many people.

A recent celebrity who spoke at the Manaia Town Hall certainly appreciated its quality. Motivational speaker and ex-boxing champion Billy Graham's first words were of praise for the hall. He added that few small towns he visited could boast such an impressive community asset. This is not the town's first hall. The current one was opened in April, 1955 by the Member of Parliament of the time Hon EB

Corbett, who lived in Okato. The hall cost 34,000 pounds or \$68,000 in today's currency. The architect was JW Brimblecomb and the builder John Ryan, with Lyn Attrill responsible for later additions to the complex.

What happened to the hall it replaced? On June 24, 1953 fire destroyed the building. With steam from the firemen's firefighting still rising 200 local people were busily engaged at the swimming pool next door planning a

new building. They elected a rebuilding committee, which was chaired by RL Bennett. JW Brimblecomb put in long hours to prepare a plan, as the existing Government subsidy for such buildings was to lapse just days into the future – haste was of the essence. Money was also needed; in just six days 12,000 pounds (\$24,000) was raised, a considerable amount at the time.

These days the Manaia Town Hall is managed by

a small Committee, who have overseen many improvements to the interior. The Committee's chairperson is Grant Stowers 06 278 8461 and the secretary is Bill Woodmass phone 06 278 8187. Cr Michael Self is also on the Committee.

The hall is well used by such groups as the Manaia Playgroup, who meet on Tuesdays 9.30am to 11.30 am. At present the children who attend number about 15, with the ages of 0 to five the focus. The group is always seeking more friendly young faces. Phone Jessica Fellerhoff on 06 274 8548 for more information.

Other activities include a dodgeball tournament, movie nights and indoor basketball. Lots of fun for the young and young-at-heart.

Just across the road Manaia Library Plus holds a key for groups who need to use the hall. Overall control is held by the South Taranaki District Council, Hawera.

## Cr Michael Self abuzz with plans for the Manaia

Colourful and controversial Michael Self aims to create a 2012 social hub at the historic Manaia Town Hall.

A first-time Councillor with the South Taranaki District, Michael Self has clearly blazed his media image. Take the anti-fracking campaign. Now it's a one-man mission to bring the Manaia Town Hall rocking alive with concerts, dances, and wedding receptions.

At a time when some rate-payers question the on-going costs of community halls, Michael Self is a man with a mission:

"I'm fighting for these community halls and this is one of the issues why I stood for STDC," he points out with a broad smile.

When former STDC Councillors, Ann Hickey and Ian Smith of Opunake, retired, Michael Self seized the opportunity to make his mark. "I bless Ann Hickey and Ian Smith," confesses Michael. It was an ideal chance for him to prove that a local Manaia boy could make good and follow in his father's footsteps. Rev David Self was active in local body politics.

Taking the local body political scene by storm is all part of Michael's outgoing personality.

Ask the man about his working life and his conversation is dotted with anecdotes about running the

Self's Nursery in Manaia. Then came the days baking for Yarrow's. Self has studied at Lincoln University and he taught horticulture and science at Inglewood High School.

A love of gardening flows through Michael's lips and for five years he was involved with the Fringe Festival.

Now Michael turns his passion towards updating the Manaia Town Hall. "I have this belief in a small community fighting back – it's happening all over the world." "There is a good, positive future for the town of Manaia and there is a resilient community"

Many thousands of local folk have flocked to the Manaia Town Hall over its 57 years.

Today the downstairs foyer with its roll of honour lists many local family names. The young children can use playgroup in the original Town Clerk and Council chambers.

Self wants to decorate the large supper rooms with RSA photographs and memorabilia. This room has been used for educational purposes.

Indoor basketball is popular in the main hall. Michael wants to boost the numbers of patrons here by holding popular concerts. "This hall was a brilliant concert venue and I'm keen to promote it."



Cr Michael Self has many plans in mind.

According to Michael Self, Manaia Town Hall a special project. It will be a talking point in the future. the Egmont Plains Community Board has made the

4

ALL YOU NEED

Supporting the Manaia Town Hall

- now and in the future

All your needs - including groceries, Lotto, Coffee-to-go, Ice creams.

Open 7 days

Mon - Fri 7.30am to 7pm, Sat - Sun 8am to 7pm

Manaia Four Square

53 South Road, Manaia

06 274 8406

### Bryan Searle Floor Sanding

**Pleased to be asked to complete the floor refurbishment of the Manaia Town Hall**

**06 345 3669**  
**027 606 9189**

### Garage Doors Specialists



WINDOWS • DOORS • CONSERVATORIES

- Sectional, Roller, Tilt.
- Automatic Openers
- Repairs & Maintenance

Call for a Free Measure & Quote  
Ph 06 7588073

**SURF HIGHWAY SIGNS LTD**

Tony Brown  
21 Napier St

**ASK ME ABOUT ANY SIGN!**

0274 628 632 mb 06 763 8215 hm

**06 761 8020**

Open Home: Sunday 23 September 2.00 to 3.00 p.m.  
Sunday 30 September 2.00 to 3.00 p.m.



### Booming With Room And Options

**22 DORSET STREET OPUNAKE**

This family sized five bedroom home is priced well. The Vendors are keen to look at all sensible offers. The house is just too big and they are looking to downsize. They would even consider a swap for a smaller house. Located one street back from Opunake surf beach and a fishing paradise. There are three bedrooms upstairs with kitchen, bathroom and living capturing amazing sea views. Downstairs we have two good size bedrooms, a separate toilet and workshop located in the large double garage with internal access.

View at [www.harcourts.co.nz](http://www.harcourts.co.nz) HX 1209311  
Open 2 View # 275654

**Harcourts**

Contact details:  
Office: 06 278 1900  
Greg: 027 222 9904  
Lorraine: 027 537 5298



# HALL FEATURE

## Billy Graham at Manaia Town Hall

For advertising phone  
(06) 761 7016



Billy Graham demonstrates the power of positive thinking - as well as the opposite!

**"You've got a beautiful hall here", Billy enthused, at the start of his recent talk.**

On Saturday September 8 inspirational speaker Billy Graham spoke at the Manaia Town Hall at 1pm. The talk was one of a tour he is making of Taranaki. Within seconds the former NZ champion boxer had the audience in the palm of his hand. "You've got a beautiful hall. Very few little towns I visit have a hall like this," he commented.

There was such variety in his address - it was a mixture of poetry, songs to guitar and mouth organ accompaniment (his own), funny voices, mimicry and lots of humour. However, coming through strongly were strong messages - mostly aimed at the young people in the audience.

He urged his young listeners to stay away from cigarettes, excessive alcohol, drugs, junk food and, despite his past as a champion boxer, to walk away from potential fights. He said a wide smile usually disarms the most aggressive person.

There was an audio-visual aspect to his show - he had pictures of his Naenae gym Naenae Boxing Academy),

his boxers and his meeting of such notables as former boxing world champion Floyd Patterson (his hero), as well as the great Muhammed Ali

Although Billy now travels the nation, as well as many countries overseas with his motivational, positive message - it wasn't always that way for the man. He grew up on the hard streets of Naenae which he called "Troubleville". His upbringing was far from optimal with both his parents addicted to alcohol and gambling. His father was also violent and who knows what else. Young Billy was well known to the police for the wrong reasons, although the local cop had a grudging respect for the youngster. Once Billy used a slingshot to smash the red light beacon on roof of the policeman's car and was chased through paddocks, over fences and stiles, caught and given a hiding. The policeman, as he walked away commented, "Great shot Billy".

However, Billy's main problem seemed to be stealing. "I used to find things before they were lost" he said,

to much laughter. However, much of his stealing was to obtain food - there was a shortage of it in his house, doubtless because of the drinking and gambling. Dinner, when it was on offer, was often fish and chips.

School and Billy didn't get along. He was truant much of the time so it was no surprise that he had serious problems with reading and writing. He was eventually expelled at the age of 14 and, as he went to collect his bike for the last time, he spotted the principal's son in the vicinity of the bike shed. Billy gave the other boy a hiding for good measure. Although often bullied he was capable of being a bully himself.

Billy attributes his salvation as being taken by the local policeman to a local boxing trainer called Dick Dunn, who, in effect, became a sort of surrogate father and treated Billy with the respect and positivity he didn't get at home. Billy soon became a brilliant boxer and at the tender age of 16 was New Zealand senior champion boxer in his weight division.

**Yarrows**  
2011

**It's a pleasure to be supporting our great community facility - the Manaia Town Hall**

**To Hire the Manaia Town Hall call 0800 111 323**

South Taranaki District Council

**Proud to support the Manaia Town Hall**

Covering South and Central Taranaki  
Hawera 06 278 5149  
Manaia 06 274 8025  
Stratford 06 765 6085  
Patea 06 273 8678  
"Total Veterinary Care"

**TARANAKI VETERINARY CENTRE**

**For advertising phone (06) 761 7016**

**HOMEMAKER**  
Curtains • Blinds • Soft Furnishings

**Free** Polycotton or Thermal Lining with all drapes made in Homemaker's on-site sewing room.

**Proud to have supplied the Curtaining for the Manaia Town Hall**

**New Plymouth - Ph: 06 757 5532**  
300 Devon Street East, Northgate Court, New Plymouth

**Hawera - Ph: 06 278 8488**  
174 High Street - Countdown Carpark

# Empawrium turns two



There is so much on display at Empawrium at great prices. Come along and get some birthday bargains.

## INDUSTRIAL GENERATORS

### TRACTOR MOUNT

37.5KVA, 62.5KVA, 93.5KVA

### Heavy Duty Drive Shafts



**Direct drive  
(no gearboxes or belts)**

Designed and assembled locally for rugged conditions.

Limited Stock - Deferred payment options available

**WE STAND BEHIND OUR PRODUCTS**



**Corkill SYSTEMS LTD**

Specialist in Dairy Automation Solutions

5 Tasman Street, Opunake, Taranaki  
 Freephone: 0800 107006  
 Ph: 06 761 7531 Fax 06 761 7336  
 Email: info@corkillsystems.co.nz  
 Website: www.corkillsystems.co.nz

In a few days Empawrium of 75 High Street, Hawera celebrates its second birthday. A special birthday celebration will run from Monday September 24 to Saturday September 29. There will be daily specials – great bargains to be had.

The shop sells goods at mouth-watering prices to earn money for the South Taranaki SPCA, which is centred in Hawera. “Empawrium’s been very successful” says manager Noleen Andrew. She adds, “The public have been very supportive”. She pointed out that the money the shop has raised has had a significant role in helping to keep the SPCA branch running. Another volunteer Kevin Upson is also upbeat.

“We’ve been delighted at how the shop has taken off”, he comments. Presently, there are 15 people working on a voluntary basis keeping the shop open. It’s hours are Monday to Friday 10am to 4pm and Saturday 9.30am to 12.30. However, Noleen admits more people are needed – double, in fact. What does the shop sell? Well, practically anything you can name. Here is just a selection of quality goods on display; clothes,

shoes, jewellery, children’s toys, ornaments, pottery, paintings, books and magazines, picture frames, crockery and kitchenware, televisions, furniture, irons, lampshades, racquets, suitcases candelabra – you name it. Also on display are photographs of SPCA animals – mostly cats – in need of a good home. The animals are well cared for at the SPCA depot in Beach Road, but would prefer to be “adopted out”.



One of the volunteers Kevin Upson finds it “very enjoyable” working at Empawrium.

Empawrium have recently acquired a 2003 Nissan van, thanks to generous donations, so are ready and able to uplift items that animal lovers want to donate. Houselots of furniture are most welcome. The same van can be used to drop off larger purchases (such as furniture) as well – free in the Hawera area and at a small charge further afield. If you can help in any way - either with your time as a volunteer, money or goods please give Empawrium a call on 06 278 8600. Or call by at the shop, which is easy to find – just beside Westpac Bank.

# SANDFORDS RURAL CARRIERS

## Rural & General Cartage

Specialising in

- Palm Kernel
- Fertiliser
- Aggregate
- Hay & Silage Bales

## Livestock Cartage

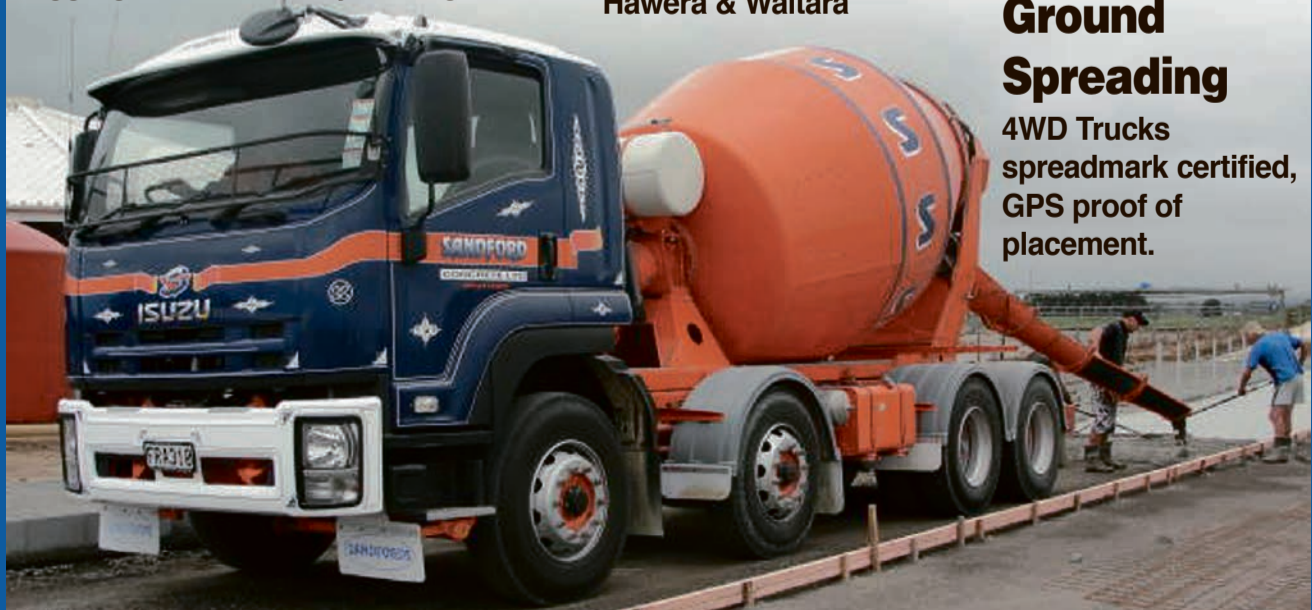
Depots: Okato, Auroa, Hawera & Waitara

## Readymix Concrete

Depots: Hawera & Wiremu

## Ground Spreading

4WD Trucks spreadmark certified, GPS proof of placement.



0508 726 336 or  
06 274 5852



75 HIGH STREET  
- HAWERA  
06 2788600  
**EMPAURIUM OP SHOP**

## 2nd Birthday Sale

HELP US CELEBRATE OUR SECOND BIRTHDAY.

Bargains Galore including:

**ALL BOOKS 50C**

**CLOTHING 1/2 PRICE**

**DAILY SPECIALS**

- BIG DISCOUNTS ON MANY ITEMS

**SHOES 1/2 PRICE**



Sale week Commencing Mon 24th September  
till Sat 29th September



The old Arawhata Dairy Factory, the scene of much activity on the day the fire started.

## New calf feed options optimise protein

Ravensdown has launched two new products for dairy farmers in Taranaki who need a dedicated feed formulation specifically for heifers.

The two new protein-optimised calf feeds have been independently formulated so that excessive protein is not passing through the animals.

“Our new calf feeds target heifer replacement rearing in a New Zealand setting,” explains Ravensdown Nutrition Business Manager, Stephen Fink.

“Rather than launching a

high-protein product in isolation, we looked at the whole nutritional environment for these farmers and calves.”

“In heifer replacement situations, heifers are being fed colostrum then whole milk from the vat, which are both high-protein feeds. Then they go on to high-protein dairy pasture. So we’ve dropped the protein levels in these feeds to compensate for increased protein in the pasture in a dairy situation,” said Stephen.

“Calves can only absorb so much protein and, of course, unused protein will exit the

body as nitrogen, which could unnecessarily lift nitrogen loading on dairy farms,” added Stephen.

The optimum-protein calf pellets, RAVCALF18 and RAVCALF14, will be manufactured by two small and well-established local manufacturers based in Auckland and Palmerston North.

RAVCALF18 is designed as a supplement for heifer calves being fed a diet of milk and/or grass through to desired weaning weights of around 70kg.

## Factory fire reignites



**Cattle underpasses and box culverts for road and river crossings. Farm Bridges. All fabricated to Transit NZ Standard.**

110 Rifle Range Road, New Plymouth  
Phone: (06) 7578214  
www.iclconstruction.co.nz

The fire at the old Arawhata dairy factory that 13 fire fighting vehicles struggled to extinguish, flared up a day later.

Owner Rex Langton just happened to be working “on site” when he noticed smoke in the middle of the building at ground level.

They managed to pull away some boards to get at the site of the rekindling fire and then put it out with a couple of buckets of water.

Rex said the four calves they pulled out at the time of the original fire were still a bit “down on their ears – not their usual lively selves”.

The final fire started around 30 hours after the Opunake Fire Service left having put out the fire at around 5:30am.

Rick Andrew who lives in a building attached to the factory however seemed unfazed by the latest fire and was now back in residence.

# SINCLAIR

## FARM KILL AND PROCESSING

• Beef • Sheep • Pigs

Call Colin or Bridgitte - 06 765 4460 • 0274 629 282  
121 Cordelia Street, Stratford

RMY

Reeves Middleton Young  
Lawyers

Great Service, Great People, Great Results

For all your legal requirements.

PHONE +64 6 769 8080

FREE PHONE 0800 733 837

CLIENT PARKING

136-138 Powderham Street, New Plymouth, Email [rmy@rmy.co.nz](mailto:rmy@rmy.co.nz) Website [www.rmy.co.nz](http://www.rmy.co.nz)

# You're Invited to Join Ravensdown Board, Management and Staff Ravensdown Annual Meeting...



### WHEN & WHERE

**Monday 24<sup>th</sup> September 2012**  
TSB Stadium, Mason Drive  
(off Coronation Drive), New Plymouth



### WHAT'S ON

Join us for drinks and nibbles followed by a company presentation and a delicious buffet dinner - starting from 6pm

### BE IN TO WIN

with your individual barcode  
Please bring this invite with you to register for the prize draw



### RSVP

Please call our customer centre on 0800 100 123 by Thursday 20<sup>th</sup> September

### TRANSPORT

Transport is available from some areas, please ask the Customer Centre for details.

**Photography:** Please note there will be photographer at this event taking photos for use in Ravensdown marketing materials including web, newsletters and annual reports.

**Leading the way in agriculture**  
0800 100 123 [www.ravensdown.co.nz](http://www.ravensdown.co.nz)



## Opunake Board Riders Inc.

Surf School Registration Day  
 Saturday 27th October Main Beach 9am  
 at Opunake Boardriders Clubrooms  
 Must be competent Swimmers

For further information/contact  
 Dean Potier, Tel: 06 761-7588 or 027 508 3281  
 Murray Weir, Tel: 027 346-6268

# Grant enables fearless learning



Thanks to the New Zealand Community Trust from Opunake Board Riders

Opunake Boardriders Club members Harry James and Murray Weir proudly show off the recently acquired surfboards. They are pictured with the Opunake High School Whole Day Course Surfing Module students. From left Harry James, Alex Corrigan, Rei Marshall, Marlene Ruka, Brylee Kendall, Johnathan Tahau, Tanek Tapiki, Murray Weir.

A \$2600 grant from New Zealand Community Trust (NZCT) has been awarded to the Opunake Board Riders Club and, as a result, the club has been able to purchase nine new 'Platino' softboards.

Opunake Board Riders Club Captain Murray Weir says the club is very grateful for the grant as its previous boards had been used for

nearly eight years.

"Soft boards allow for fearless learning," says Mr Weir. "They don't chip easily, and they enable kids to learn to surf in the pool without the fear that comes with using a fiberglass surf board."

Mr Weir also says that while more than 40 children have already registered for the club's Surf School lessons, the new boards will increase interest in the club.

Club Funding Officer, Dean Potier says the club members and parents also did a lot of fundraising to

help pay for the new boards. They held food stalls and provided marshalling assistance at sporting events. As a result, \$1000 was raised to contribute towards the surf boards.

As the boards have just arrived, the Opunake Board Riders Club is now looking forward to upcoming competitions around the New Plymouth region. Mr Weir hopes some of the kids that are advancing may be able to use the new boards during the surf competitions run by the club.

Mike Knell, NZCT Chief Executive, says the trust

returns funds generated at NZCT gaming rooms back to the local community, and this grant is a good example of this.

"We are very supportive of the Opunake Board Riders Club and think the way it teaches water safety and surfing skills to young Kiwi kids is to be commended," says Mr Knell. "We like the fact the club members worked hard to raise funds for the boards – and that we were able to help them achieve their funding goal. NZCT wishes the club well for its upcoming season."

## SPRING INTO ACTION WITH A BACKYARD CLEAN UP

### FS 38 LINETRIMMER

Powerful and durable Linetrimmer for domestic trimming and lawn edging.

**\$295**



### MS 170 MINIBOSS™

The most compact STIHL chainsaw, ideal for occasional home use.

**\$395**



### HS 45 450 COMPACT HEDGE CUTTER

Compact and lightweight Hedgecutter for trimming and shaping hedges in domestic and light-commercial applications

**\$595**



While stocks last

Right Into Power Equipment  
**COLLINS SPORTS CENTRE**  
 PH (06) 761-8778 \* Tasman St, Opunake

**STIHL**  
 Specialist Dealer



Opunake youngsters make the most of the free swim held last weekend to celebrate the re-opening of the Opunake Community Baths.

## HASSLE-FREE NITROGEN DELIVERY

Why waste time driving round the mountain to collect your nitrogen fertiliser, when we can deliver it on farm, direct to you.

To place an order, call 0800 222 090. Be sure to specify "round the mountain delivery" to qualify for this great time-saving service.

Balance n-rich

Sustain  
 Powered by AGRONIX

Balance



# Honours for Teen Dream Team and Lashy



Above: Matt Lash, Coach.

At right: Thomas Bell, Tara Potter and Daryl Read.

The Opunake High School Hillary Challenge team continue to receive recognition for their outstanding achievement capturing the Hillary Challenge trophy in May.

The Team received the team of the year at the South Taranaki Paddy Manu Sports awards and coach Matt Lash received a South Taranaki Community Service Award from the South Taranaki District Council for his service to sport.



Team members Ethan Bloemen and Gemma Gray.



## MANAIA WI WINS INDOOR BOWLS



The South Taranaki Federation of WI held an Indoor bowling tournament with teams from Turuturu, Manaia, Mangatoki, Rawhitiroa, Kaponga, Riverlea and Maata WIs taking part. The eventual winners were Ann Chisnall (Skip) Cleta Clark and Phyllis Malcolm from the Manaia WI and runners up were Glenyss Shearer (Skip), Frances Bayley and Gaye Arnold from Rawhitiroa WI.

Pictured here are, from left, Phyllis Malcolm, Cleta Clark and Ann Chisnall.

The winning team will now go on to play against North Taranaki in a regional playoff with the winner of this progressing to a National Final.

See our website  
[www.opunakecoastalnews.co.nz](http://www.opunakecoastalnews.co.nz)  
 for all our new email addresses or refer page 2.

### COWSHEDS

Herringbone Sheds,  
 Rotary Sheds,  
 Rectangle Yards  
 Structural & General Engineering

- Pipe Fittings
- NZ Hydraulics Agency
- Agricultural Implement Pins
- Tines, Blades
- Steel Sales
- Pennzoils
- Irrigation Fittings
- Bolts & Nuts

### D JENNINGS LTD

GENERAL ENGINEERS  
 Main St, MANAIA Ph (06) 274 8563  
 Mobile 027 445 4653

### CAVEYS LIVESTOCK

2YR JERSEY BULLS  
~~1YR JERSEY BULLS~~ SOLD

Reared from top local herd. Bws available

also

~~2YR ANGUS BULLS~~ SOLD

All bulls in good condition and quiet

BVD blood tested negative  
 BVD & Lepto Vaccinated  
 TB Tested Negative

Grazing and Payments negotiable  
 Phone G & S CAVEY 06 7524123

Spring is Here!!  
 Visit 'The Raised Eyebrow' Cafe

### For Hardened Healthy Flower And Vegetable Plants

All of our plants are displayed outdoors in natural conditions. We have 4 growers to ensure a continuous supply and huge range.

Just down the road from Tupare Gardens

GOOD GROWTH IS GAINED FROM GREAT KNOWLEDGE

Corner Mangorei Rd & Junction Road New Plymouth  
 Call us today on (06) 7588831  
 open 7 days 8.30 to 5pm

Your friendly 'Go Gardening' Centre

# MAYOR'S COLUMN



*Mayor Harry Duynhoven  
New Plymouth District*

Who else is gearing up for 10 days of garden goodness? We're just a couple of weeks

away from the start of the Powerco Taranaki Garden Spectacular and the Taranaki Fringe Garden Festival, when local gardeners show the rest of New Zealand just how good we have it here when it comes to climate, soil and creativity.

Coastal and nearby inland gardens feature in both the Garden Spectacular and Fringe Festival – about 30 gardens in total from Oakura to Hawera will be opening their gates to visitors from around the country.

Congratulations to all of those garden owners who

are right now putting in the work to have their gardens in the best shape possible (despite our recent challenging weather). No one gets their garden up to festival level without putting in years of work and love.

I hope that locals take the opportunity to see these gardens for themselves – as well as the gardens in New Plymouth, North Taranaki and the eastern hill country.

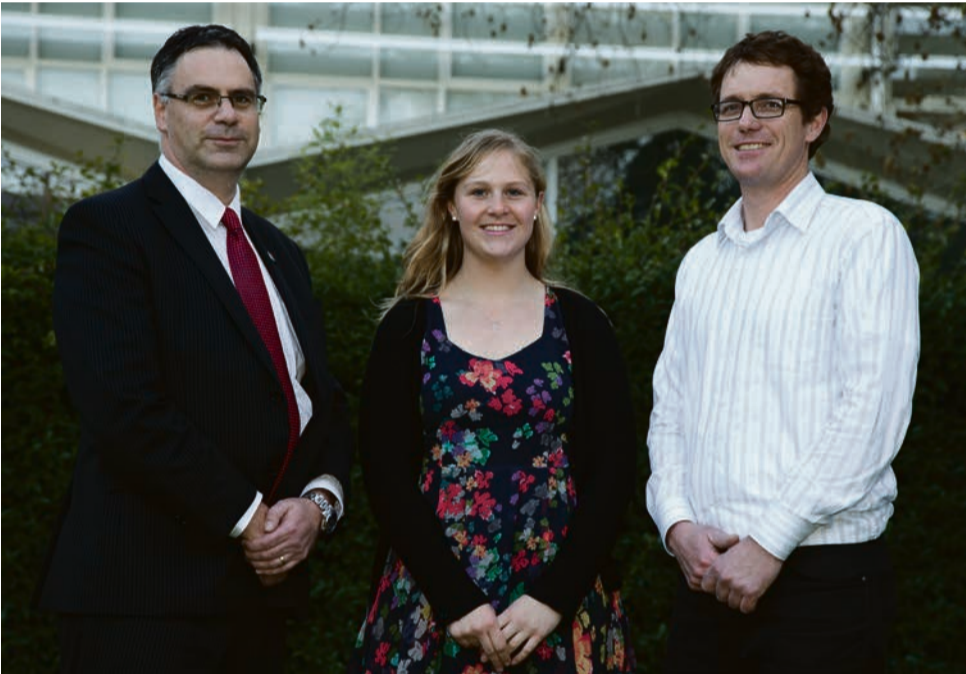
Our diverse local climates and conditions make for an intriguing variety of approaches to gardening in different parts of the region.

The range of garden types is also an example of how Taranaki people recognise the opportunities around them and forge their own innovative path towards success.

I expect the gardens in these two major events will inspire many hobbyists and those who potter about their home patch to try something new.

I'm looking forward to seeing some of these gardens for myself during the festivals' run from 26 October to 4 November. I hope to see you there!

## Taranaki student wins prestigious Beca engineering scholarship



From left, Beca Regional Manager South Island Craig Price, scholarship winner Sarah Poole, and the Dean of Engineering and Forestry at the University of Canterbury, Dr Shayne Gooch, at the presentation in Christchurch.

Taranaki's Sarah Poole has been recognised for her potential to contribute to the future of the engineering profession in New Zealand, receiving a \$3000 Beca Engineering in Society Scholarship for University of Canterbury students.

Sarah, who grew up on the family dairy farm at Pihama, in South Taranaki, and attended Sacred Heart Girls' College in New Plymouth, is studying towards a Bachelor of Engineering (Honours) specialising in mechatronics.

She enjoyed Physics and Maths at high school but was first attracted to engineering as a career after her family changed its milking system from a tra-

ditional Herringbone shed to a new rotary system with all the bells and whistles.

"The new system saved my family a couple of hours of work each day and, as I looked at the positive impact the new technology had on my family life and our business, it made me interested in how similar developments could improve people's lives," Sarah says.

"I soon discovered in my engineering studies that Physics and Maths simply represent tools an engineer can call on. I thoroughly enjoy the problem solving aspect of engineering, which is present in every discipline and I find it very interesting collaborating with people from different backgrounds to come up

with a novel solution to a problem."

Biomedical engineering is now her main area of interest and she is keen to pursue an academic career after postgraduate studies in the United States.

For 22 years engineering consultancy Beca has rewarded young engineers for their academic success, cultural and sporting achievements and community involvement and this year's recipients join an elite group of past winners who have greatly appreciated the financial prize, totalling \$15,000 each year.

"The winners are exemplary students and our engineering leaders of the future. I have no doubt they will make a significant con-

tribution to the community as a whole and play a part in broadening the understanding of engineering and its significance in our society," Beca Regional Manager South Island Craig Price says.

The scholarships take into account academic results, communication skills, leadership qualities, contribution to university and community activities and the candidate's potential to add value to the engineering profession.

Sarah plays netball and rugby and has coached a sevens team at her university college, where she was also one of the senior students in charge of the day-to-day welfare of the first-years. (She represented Taranaki in the secondary school girls' rugby team in 2006 and 2007).

Sarah has recently completed a half-marathon. She's also a certified diver and has learnt karate.

### About Beca

Established in 1918, Beca is New Zealand's largest employee-owned engineering consultancy, employing more than 2,600 staff in seven countries. Headquartered in Auckland, Beca operates from three market hubs: New Zealand, Australia, and Singapore.

Beca works in six key sectors: buildings, industrial, power, Government, transport and water. Beca's range of services includes project management, planning, engineering, architecture, surveying, cost estimating, asset management and valuations.

For more information, [www.beca.com](http://www.beca.com)

or contact: Janine Ogier, Convergence Communications, 027 7534 360.

## Mania WI brightens young lives

Mania WI members, in keeping with the National Theme 'To Brighten Young Lives,' had a display of garments and quilts, which were to be donated to the local South Taranaki midwives – this takes the total to 300 items for the year so far and we trust many babies have benefited

from our efforts.

Member Phyllis Malcolm shared gardening ideas and tips with members and is going to give us further ideas next month, which members are looking forward to. It is the time of year for us all to think about what we are going to plant in our vegetable and

flower gardens.

The Mary Hutton Trophy was presented to Lois Crudis and the wandering coin was won by Nancy Mortlock.

Competition Results:  
Bloom: 1<sup>st</sup> Daphne Ashley  
2<sup>nd</sup> Phyllis Malcolm  
3<sup>rd</sup> equal Marion Smith – Ann Chisnall

Shrub: 1<sup>st</sup> Phyllis Malcolm  
2<sup>nd</sup> Daphne Ashley  
3<sup>rd</sup> Ruth Binns

Covered Coat Hanger:  
1<sup>st</sup> Jenny Hamley  
2<sup>nd</sup> Daphne Ashley  
3<sup>rd</sup> Ann Chisnall

Lemon Honey  
1<sup>st</sup> Jenny Hamley  
2<sup>nd</sup> Ann Chisnall  
3<sup>rd</sup> Marion Smith

# TARANAKI

## PET FOODS LTD

Injured - Unwanted Cattle

Call (06) 751 2779



Fruit and vege box  
- delivered Taranaki  
wide

Fair trade eco - friendly products

Organic vegetable seedlings &  
herbs  
all at competitive prices



67 Carthew St, Okato, Taranaki  
06 752 4888 email: [seedcoastal@vodafone.co.nz](mailto:seedcoastal@vodafone.co.nz)

## OPUNAKE CONCRETE 2005 LTD



**SPECIAL - ONE-MONTH ONLY**  
**Any Product**  
**- Buy 10, Get One Free**

Terms and conditions apply

**10 Tasman Street**  
**Opunake**  
**06 761 8645**

## RENTAL VEHICLES



- CHARTER BUSES
- VANS
- TOUR BUSES

**ALUMINIUM SCAFFOLDING  
FOR HIRE**

\$35 per day, \$50 weekend.  
More than 6 days \$30 per day.

**WATERBLASTER FOR HIRE**

Petrol 3000 psi 15L/minC

Cost: Half day \$90, Full day \$120, Weekend \$130. Friday after 3pm return Monday 9am.

Bond for waterblaster and scaffolding \$50.

For more information contact Tracey or Christine at

## PICKERING MOTORS

11 TENNYSON ST OPUNAKE PH (06) 761-8363  
0800 22 11 20 Email: [pickering.motors@xtra.co.nz](mailto:pickering.motors@xtra.co.nz)

MEEGAN'S COLUMN



Meegan Care

# Making friends with your feelings

Your emotions are not in your head, you think about your emotions using mind, also your focus and repetitive thoughts do effect your emotions, however emotions are primarily felt in your body.

Become aware of your feelings. What do your emotions feel like in your physical body? Where do they show up in your body? Take a moment to consider the following; Anger, place your hand to the part of your body where you most feel strong anger. Joy; now place your hand on the part of your body where you feel joy. Nervous; place your hand where you feel nervous in your body. Just let the knowing that arises in your physical experience guide you.

*The Dance of Focus*

Now just as best you can imagine you are feeling ner-

vous in this moment (or any other reasonably strong feeling that you choose). Notice your own patterns in reaction to uncomfortable emotions. Do you quickly avoid or attempt to shut off the feeling, or perhaps you dive into the feeling, allowing it to take you over, becoming controlled by the rise and fall of your emotional life.

A useful response to uncomfortable emotions involves a dance of focus. First observe the arising feeling, you may choose to place your hand on the part of your body where you feel the emotion, then take a soft breath into this area. Now bring your awareness to the deeper truth that "you have this feeling, and you are more than this feeling...", you may even say this statement to yourself. In this way you are learning to allow a sense of space in relation-

ship to your emotions. This helpful strategy supports you in moving from reaction to responsiveness and growing resilience.

Of course if you are struggling with feelings in such a way that your everyday functioning has become limited then please seek help from a professional you trust.

*Meegan Care is a qualified counsellor with a holistic perspective, experienced at working with a wide range of life issues, including stress, anxiety and physical issues. She specialises in fast acting solutions that free you from pain and "that stuck place", enabling you to move forward in your life in empowerment and joy.*

*www.meegancare.co.nz*  
*For all inquiries email info@meegancare.co.nz, phone 0800THERAPY (0800 843 727)*

**See our website**  
**www.opunakecoastal-news.co.nz**  
**for all our new email addresses**  
**or refer page 2.**

*Are you living your best possible life?*

Holistic Counselling & Healing  
 Free yourself from pain, stress & anxiety

**Meegan Care Ph: 0800 THERAPY**  
 Dip. Psychosynthesis Counselling  
**www.meegancare.co.nz**

# OPUNAKE FRIENDSHIP CLUB

Monday August 27 was an afternoon to remember. 'Barnies Belles' gave us a taste of the Queens Diamond Jubilee. Her Majesty 'Elizabeth Alexandra Rose' was played by Mrs Betty Field. The Queen and Prince Phillip (Mrs Pat Gibson) arrived by barge to the tune of 'Cruising down the river' (different words of course). The Queen wore a lovely navy blue dress and matching coat and hat trimmed with white - white gloves and handbag and, of course, 'the pearls'.

She was greeted with great enthusiasm, the audience rose to their feet and sang 'God save the Queen' (never mind Prince Phillip). Of course she had Royal Duties to perform, Knighthoods to bestow on Knights of Highway 45. These included:  
 Sir - Arthur Hughson - for his association with the Chair  
 Jack Van der sar - for his cucumbers, made famous by the Queen's cucumber sandwiches  
 Geoff Williams - for his service to the RSA.  
 Dames - Vicki Sandford - for

lighting up Opunake  
 Sister Veronica - for settling in NZ and becoming a Kiwi.  
 Molly Harvey - for her service to Barnes Belles.  
 Joan Jefferies - for the years she spent living at the Opunake Beach as a child with her brothers and sisters.  
 Patricia Dudley - for her dedication to the Opunake Town Hall. The new loos are great.  
 We even had a trip to the races to see the Queen's horse 'Jubilee' win the State Highway 45 Cup, presented by the President of the Pihama Racing Club, who also tied the ribbon on Jubilee. It was a proud moment for the Queen (never mind Prince Phillip). The audience certainly dressed for the occasion, it had an 'Ascot' feel about it.  
 Then of course, the Queen's Concert at Buckingham Palace - re Opunake Town Hall. Rolph Harris being one of her favourites was represented by the song - 'Two Little

Boys', followed by 'White Cliffs of Dover', and 'Po Kare Kare' and 'Now is the Hour' then lastly 'God Defend New Zealand' - all ably sung by the 'Belles of Barnes Choir'. With audience participation it was enjoyed by everyone.  
 So the Queen and Prince Phillip (who didn't fall to sleep) said their farewells. But what is this? The next minute the Queen is going a twirl on the stage having arrived by parachute with 'James Bond' again!  
 My goodness, she has lost her hat. I do hope that is all she has lost as we all know James Bond's reputation.  
 These wonderful people in Barnes Belles and other organisations put in a lot of time and effort to entertain us. It is a lot of fun and everyone is welcome to come along. The last Monday of every month at Opunake Town Hall, 1.30pm start. \$2.00 gives you a raffle ticket, entry and afternoon tea.



The Queen (Mrs Betty Field) and Prince Philip (Mrs Pat Gibson) at the Opunake Friendship Club.

**VOSPERS**  
 Funeral Home

Exceptional service when you need it most

Phone 759 0912 at anytime

- Member FDANZ gives you added assurance
- Modern chapel with adjacent catering lounge
- Plenty of off-street parking
- Prearranged funeral plans at no charge
- Environmentally friendly options

**Exceptional service... when you need it most**

At Vospers, we show we care by attending to every little detail to make the service everything you'd like it to be. And we don't stop caring when the funeral is over, because at Vospers, nothing is too much trouble.

Vospers funeral directors Andrew King, Kirsty Mehrtens, Bruce Hanrahan (Manager), Dart MacLachlan & Paula Shaw.

257 Devon St East, New Plymouth | www.vospers.co.nz

**HUGHSON & ASSOCIATES**

**WE ARE YOUR PERSONAL, FRIENDLY FARMING & BUSINESS ACCOUNTING SPECIALISTS**

**0800 ACCOUNTANT 2 2 2 6 8 6**

**OPUNAKE OFFICE is OPEN every WED 9.30am-3pm**  
 Ph our Hawera office on (06) 278-4169 • 26 Wellington St, Hawera  
 or E-mail: services@hughson.co.nz www.hughson.co.nz

**YOUR CHARTERED ACCOUNTANT**

- is a member of the New Zealand Institute of Chartered Accountants
- studied for 7 years to achieve his professional qualification
- is required to undertake on going professional development
- is bound by a code of ethics and professional standards
- has a professional qualification from New Zealand that is internationally recognised

Look for the word "Chartered" your assurance of quality

Mark G Hughson, B.B.S., C.A., Dip B.S.

Dorothea Henry

**TRADES & SERVICES**

**FREEVIEW** dishes and aerials. TV tune in or set up Freeview box. Phone Rob at Taranaki Aerial Services: 0800 284 396

**Coastal Cleaning Services**  
If it needs cleaning - you need me.  
20 yrs exp. Inside or outside. No job too big or too small.  
**Ph 027 237 8563**

**COASTAL STOPPERS.** GIB Phone  
Glenn 027 524 5745.

**GARDENING**

**GARDEN MULCH** \$20 per tractor bucket load. Two buckets = 6 x 4 trailer. New Life Nursery 183 Tasman Street. Opunake

**BANKSIA HEDGING** Top plants must clear. Now only \$3.60 plus gst. New Life Nursery 183 Tasman Street Opunake

**HEDGING SPECIALS** Check out some great deals. New Life Nursery 183 Tasman Street. Opunake

**FOR SALE**

**FREE GEL TONER** with New Zealand's Living Nature Purifying or Vitalising cleanser at Hardy's the health shop in Centre City 758 7553

**PROPOLIS TOOTHPASTE** Buy one get one free At Hardy's the health shop in Centre City 758 7553

**LEGONA NATURAL** luxury for your hair and body produced and a top seller in Germany for over 25 years. At Hardy's the health shop in Centre City 758 7553

**COLD AND FLU** relief, to reduce severity of cold and flu symptoms, fever, headache, runny nose and nasal congestion. It worked for me. At Hardy's the health shop in Centre City 758 7553

**SPEND \$50** on Celebrity Slim and receive 2 breakfast bars free. At Hardy's the health shop in Centre City 758 7553 this month.

**GUYS NEED HELP** with feeling old in the mornings, stiff in the wrong places; maybe your testosterone is low. May also improve sex drive, build muscle and burn fat. More information At Hardy's the health shop in Centre City 758 7553

**NEW STOCK MGP SCOOTERS** arriving daily, parts now in stock. Available at Collins Sports Centre. Opunake

**LAWNMOWERS SECONDHAND**  
Pushmowers and ride-on mowers. All workshop serviced. Available at Collins Sports Centre, Opunake

**LAWN MOWING**

**LAWNS NEED MOWING?** We mow lawns! Phone 0274 572 741 or A/H 06 764-8885.

**PAINTING & PAPERING**  
Tradesman - FREE quotes  
**G & E Lindsay**  
Ph (06) 752 1113 or 027 651 0148

**HOUSE FOR SALE**

**PROPERTY FOR SALE** Opunake Township, renovated 1920's villa. \$269,000 NEG Very low maintenance, Decromastic tiled roof. Aluminium windows, Pallisade external cladding. Fully fenced. 3 double bedrooms, 2 living areas, modern kitchen and bathroom. Conservatory, 2 toilets, Infinity gas water heating. Log fire and Rinnai gas heater, HRV. Sleepout, 4 car garage or 2 car/workshop/auto doors. For more details phone 027 327 1378. **Open Home Sunday 23rd September 1.30 - 3.00pm.** 1 Whitcombe Rd. To view see #9870 www.homesell.co.nz or www.trademecolnz

**WANTED TO BUY**

**SCRAP METAL** - for all scrap metal Taranaki-wide, give us a call. Molten Metals (06) 751 5367 www.moltenmetals.co.nz

**PUBLIC NOTICE**

**OPUNAKE HIGH SCHOOL**  
**LENA N SHARROCK MEMORIAL TRAVEL SCHOLARSHIP** for Young Women

This scholarship has been established to assist past and present pupils of Opunake High School from Year 12 up to the age of 25 years with overseas travel.

Further information and application forms are available from The Principle Opunake High School P.O.Box 4, Opunake. Applications close on Friday 26 October, 2012

**PART TIME WORK**

**CASUAL MYSTERY** Shoppers needed in Opunake Get paid to shop. Apply on line at www.mslogistics.co.nz

**COUNSELLING**

**Reflections** Counselling Services 89 Regan St, Stratford Tuesday & Wednesday by appointment Ph 06 765 8280 Faith Smith MNZAC Diploma in Counselling WelTec

**PUBLIC NOTICE**

**OPUNAKE PRIMARY SCHOOL BOARD OF TRUSTEES CASUAL VACANCY**

A casual vacancy has occurred on the board of trustees for an elected parent representative. The board has resolved under section 105 of the Education Act 1989 to fill the vacancy by appointment. As less than ten percent of eligible voters on the school roll responded by 4th September 2012, to fill the vacancy, then no by-election will be held.

**CARDS EGMONT EUCHRE CLUB** Would you like to come and join us? Cards, Raffle, Cuppa. Every Thursday at the Opunake Bowling Club **1pm - 3.30pm ALL WELCOME**

**SITUATIONS VACANT**

**HomeCARE®**  
Direct Shopping  
Do you want to walk those KILOS off and replace them with DOLLARS?  
We are recruiting Distributors NOW!  
Text 021 565313,  
Sign up/look on line [www.homecaredirect.co.nz](http://www.homecaredirect.co.nz)  
Phone, internet & car are a MUST.

**PRIZEGIVING**

**Coastal Junior Soccer (Senior Prizegiving)**  
**11th, 13th, 16th grade players**  
**10.30am Saturday 29th September**  
**at Sandfords Event Centre**  
Light refreshments provided  
**Contact David Gillum 06 761 8606**

**LIVESTOCK AUCTION**

**27<sup>th</sup> ANNUAL UNRESERVED BULL SALE**



On account Washer & Co

**'THE BULL SHOP'**  
Cnr Koru & Main Roads, Oakura  
Thursday, 27th September, 2012  
I am sharp

**Offering 480 Service Bulls**

**Order of Sale 11.00am Sharp**  
26 x 2 & 3yr Hereford Bulls  
17 x 2 & 3yr Angus Bulls  
50 x 2yr Ayrshire Bulls  
35 x 2yr Friesian Bulls  
10 x 1yr Hereford Bulls

**Special Feature:**  
**341 Jersey Bulls 12.00pm**  
71 x 3yr Jersey Bulls  
200 x 2yr Jersey Bulls  
70 x 1yr Jersey Bulls (1.30pm)

**All bulls BVD tested Negative Jersey & Beef Bulls Vaccinated**

**Special Notes:**

- Unreserved Sale
- Free credit until 20th December 2012
- Free delivery within Taranaki
- Free Grazing of Bulls until week required, up to 1st December 2012
- \$3,000 worth of Spot Prizes
- The Washer guarantee of satisfaction, all bulls held in their care will be delivered in good health as viewed or replaced or money refunded
- All bulls are in very good condition & quiet.
- \$100 to be taken off the purchase price of the 2 & 3yr old bulls if delivery taken within week following sale
- Free luncheon & hospitality provided
- Identification catalogue at sale
- Your choice of three livestock companies for your invoice

**Only The Best 50% of Washer Bulls Offered For Auction**

Please register promptly at the sale with the company of your choice

**Opunake Surf Life Saving Club**  
**Annual General Meeting**  
Sunday 23rd September  
**12.30pm at the Surf Club**  
Sausage sizzle before meeting from 11.30am  
Everyone welcome  
Any queries or nominations to:  
**Michael Roach at Farmlands Opunake**

**PUBLIC NOTICES**

**PERFORMING ARTS GRANTS**  
Your invitation to share the dream!

The **Dame Malvina Major Foundation** is proud to provide funding opportunities to talented young Taranaki performing artists.

Applications are now being invited for the second annual funding round, closing at 5pm on Sunday 30th September 2012.

Grants are available in three categories to support the cost of education, training and development in the performing arts in New Zealand or overseas:

**Secondary:** For Taranaki secondary school students aged 12-18 years.

**Elite/Tertiary:** For performers from Taranaki pursuing a career in the performing arts through tertiary qualifications.

**Group:** For groups whose student members are based in Taranaki and are providing training and/or development opportunities in performing arts.

For an application pack and further information please contact Heather Cooper 06 7573155 or [dmmf@staplestaranaki.co.nz](mailto:dmmf@staplestaranaki.co.nz)  
[www.damemalvinamajorfoundation.org](http://www.damemalvinamajorfoundation.org)



**Pihama Hall Society  
AGM  
Monday 24 September 2012  
8pm  
at the Pihama Hall  
Everybody Welcome**

**Opunake Business Association  
NEXT MEETING  
Monday October 1st at Opunake Surf Inn**  
  
5:30 Social, 6.00 pm Meeting  
We welcome any member of the community to our meetings, you don't have to have a business.

**JKL**  
JOHN KELLY LIVESTOCK LTD  
**Gail Drought - Livestock Agent**  
4036 Main South Road, Opunake | Ph: 06 761 7012 | Fax: 06 761 7018  
Mob: 0274 509 108 | Email: seaviewfarm@xtra.co.nz  
**JKL** "Livestock, it's our lives"

**NOW  
IN HAWERA**  
Hawera Ph: 06 278 7126  
**In The Countdown  
Carpark**



**Taranaki's largest range of  
roll stock carpets & vinyls**

**PERMANENTLY  
REDUCED PRICES**

**\$49 Polypro  
Broadloom metre**

**\$59 Polypro  
Broadloom metre**

**\$69 Polypro  
Broadloom metre**

**\$79 Wool  
Broadloom metre**

**WE HAVE YOUR  
FLOORING BUDGET  
COVERED**

Free  
measure  
& quote  
Taranaki  
wide

see US before you decide...  
**Carpets Wholesale & Retail 2006 Ltd**  
Northgate Court, Courtenay Street, New Plymouth  
Phone 06 758 9187 Email: cwrltd@xtra.co.nz

**Are You Prepared For  
Another Storm That Will  
Cause Power Outages?**

We have a solution for you!



We have a wide range of generators available which extend from 15kva to 85kva suitable from your home needs to the running of your rotary cowshed!

Give us a call on 06 765-5290 & talk with Jono or Ann to discuss your needs.

**KEEGAN  
ELECTRICAL**



**ACE Taranaki**  
Adult Community Education

Term 4 Courses out Now!

**Arts & Crafts**

- Acrylic Painting - Personal Development
- Adventures in Drawing & Painting
- Card Making - Paper, Inks & More!
- Creative Mosaics
- Drawing - Personal Development
- Drawing & Painting
- Dressmaking
- Get Inky with Cards
- Jewellery Enamelling
- Jewellery Skills
- Oamaru Limestone Sculpture
- Paper-Making & Paper Crafts
- Portraiture - In your Face
- Pottery
- Still Life Painting
- Upcycling - Cut-Up Couture, Edgy Garments
- Upcycling - Re-purposed Kids Clothing
- Upcycling - Welcome Baby
- Upcycling - Women's Clothing
- Upholstery
- Wood Work

**Computing**

- Computer Basics
- Computer Basics to Advance
- Various Courses in Stratford - Coming Soon!!

**General Interest**

- Active Citizens
- Babysitting Skills
- Basic Beginners Dog Obedience
- Interior Design
- Pin Hole Photography
- Photography Techniques for Compact Cameras
- Photoshop - Level 1
- Puppy Pre-School
- Reader/Writer
- Social Media
- Tutor Training

**Health & Wellbeing**

- Awareness through Movement
- Body Bliss Yoga
- Capoeira for Beginners (and Up!)
- Introduction to Healing Touch
- Jin Shin Do Acupressure
- Massage Therapies - Stage 1
- Massage Therapies - Stage 2
- Pilates
- Reiki Taster
- Self Defence
- Tai Chi Chuan
- Urenui Yoga
- Weight Management to Change your Life

**In the Kitchen**

- Basic Baking
- Buttercream Basics
- Cake Decorating
- Cake Decorating with Sugar Flowers
- Cup Cake Collection
- Cup Cakes - Xmas Themed
- Indian Cooking
- Sri Lankan, Indian & Thai - Series 1
- Sri Lankan, Indian & Thai - Series 2
- Weight Loss Cooking

**Languages**

- Do you want to belong - Improve your English?
- French for Travellers
- French - The Next Level
- German - Beginners
- German - Intermediate
- Italian - Beginners
- Italian - Practical Italian
- Mandarin for Beginners
- NZ Sign Language, Levels 1A, 1C, 1D, 3C
- Portuguese - Beginners
- Spanish - Beginners
- Spanish Intermediate - Level 2

Courses are held at various locations through the region and are at various costs. For further information on any courses outlined above, please contact us or visit our website. [www.acetaranaki.ac.nz](http://www.acetaranaki.ac.nz)

Enrol 2 weeks prior to course commencement and receive a 5% discount!

ACE Taranaki

FreePost 204660 | PO Box 199 | 343 Broadway South, Stratford | Taranaki | 4352  
Phone 06 765 0404 | 0800 223 827 | Website [www.acetaranaki.ac.nz](http://www.acetaranaki.ac.nz) | Email [ace.taranaki@xtra.co.nz](mailto:ace.taranaki@xtra.co.nz)

**No Crossing  
No Milk Pick Up!**

Fonterra have advised if your farm track doesn't have proper culverts installed then their tankers won't pick up your milk. So if your waterway needs a culvert in place, we have the answer to your problem.

Our modular Box Culvert system means you can get the exact size you need. Box Culverts can be installed using a 15ton digger or we can provide full installation.

Fast easy installation ensures minimal disruption to you. Strong enough for all vehicles and stock.

All products are backed with our full replacement guarantee.



Stock is limited, don't delay, CALL NOW!

Mention this ad to receive all galvanized steel work FREE!

Valid until September 30th

**Kuriger Concrete Products Ltd**  
Phone Manoc  
06 761 8122 or 0277 551 398  
[www.kurigerconcreteproducts.com](http://www.kurigerconcreteproducts.com)

**TOTALSPAN**  
STEEL BUILDINGS  
WHO CAN? TOTALSPAN!

## WHAT'S ON

### SCRAP & CHAT / CARD MAKERS EVENING

Mondays at Pastimes, Tasman Street, Opunake from 7-9pm. Beginners and new people welcome.

### EGMONT EUCHRE CLUB

Meets every Thursday 1pm at the Opunake Bowling Club

### OPUNAKE SWIMMING BATHS

Open to the public 1- 4pm Sundays, 3.30 – 5pm Thursdays. Other Classes available ph 761 8052

### PERCY THOMSON GALLERY

3rd September - 14 October. Body in Action - put your body to the test. Free entry. at Prospero Place, Stratford. Refer advert back page.

### VILLAGE GALLERY- SHIP OF SOULS

3-28th September - Eltham

### PIHAMA CRICKET CLUB AGM

Thursday 20th Sept 7.30pm

### LIVE MUSIC- CAFE 49

L.M.K Friday 21 September

### MANAIA PRIMARY SCHOOL PET GALA

Sat 22nd Sept family day out for all – refer advert

### LIVE BAND -OPUNAKE SURF INN

My Mobile P Lab 22 Sept

### OPEN HOME: 1 WHITCOMBE STREET OPUNAKE

Sunday Sept 23rd 1.30 to 3.00 pm. Refer classified advert.

### OPUNAKE SURF LIFE SAVING CLUB - AGM

Sunday 23rd September 12.30pm – Sausage sizzle before meeting.

### MIDGE MARSDEN

Sunday 23rd September at the Butler's Reef 3pm onwards– see advert for more details.

### RAVENSDOWN ANNUAL MEETING

Monday 24th September 2012, TSB Stadium, New Plymouth – refer advert for full details

### PIHAMA HALL AGM

Monday 24 September 8pm start

### 27TH ANNUAL UNRESERVED BULL SALE

27 September 11am - refer public notice

### TODD ENERGY AQUATIC CENTRE

Family fun times 10.30am to 4.30pm School holidays

### COASTAL JUNIOR SOCCER

Senior prizegiving 10.30am Saturday 29th September. Sandfords Event Centre. See public Notices.

### BREANNA MORGAN'S PIANO RECITAL

Sunday Sept 30th 1pm Opunake High School. \$10 price includes a High Tea.

### MALVINA MAJOR FOUNDATION PERFORMING ARTS GRANTS

Applications close 30th September - refer public notice.

### OPUNAKE BUSINESS ASSOCIATION

Next Meeting Monday October 1st at Opunake Surf Inn 5:30 Social, 6.00 pm Meeting - see advert for further details.

### CUE THEATRE - ENTERTAINING ANGELS

6th October - 20th October - A comedy by Richard Everett. Tickets on sale at Inglewood Book Centre - refer advert on back page

### SPORT NEW ZEALAND RURAL TRAVEL FUND

Application close 12th October

### CTHT CHARITY DINNER

13th October @The Ritz - Sandfords Event Centre

### COASTAL SINGERS CELEBRATING 30 YEARS DINNER SHOW

Saturday 13th October Opunake High School Hall - refer advert

### THE MODERN JIVERS

Starts 18th October 7.30pm then every Thursday at Opunake Town Hall . Foxtrot, Waltz, Samba, Cha Cha Cha, Modern Jive Workshops.

### OPUNAKE BOARDRIDERS INC.

Surf school registration day Sat. 27th October 9am main Beach - see advert for full details

### THE LITTLE SHOP OF HORRORS

Hawera Memorial Theatre 1st – 10th November

# Spring brings in popular wine, art and dinner night

The fourth annual art auction at the Okurukuru Winery happens Friday September 21 evening this year. 'Art on a Plate' is a dinner and auction to raise funds for the Kaitake Kindergarten.

"We've had a long history of supporting the art and food night with Kaitake Kindergarten, so it's nice to see it continue", says Eileen Marshall, winery general manager. "One of the aspects of our food at Okurukuru is how it is presented, so 'Art on a Plate' is a great name for the evening, which combines beautifully tasting and presented food with the art that is up for auction."

The auction will showcase over 25 regional artists and will again be supported by McDonalds Real Estate's Anne Wilson as MC and Peter McDonald as

auctioneer. One local artist who will have his art for auction, Douglas Reid, was recently selected for the Art Expo at Auckland Grammar School.

"I'm pleased to have my work represented in this year's Art on a Plate. It promises to be a fun night," commented Douglas Reid, whose art can be seen at the Real Tart Gallery in New Plymouth.

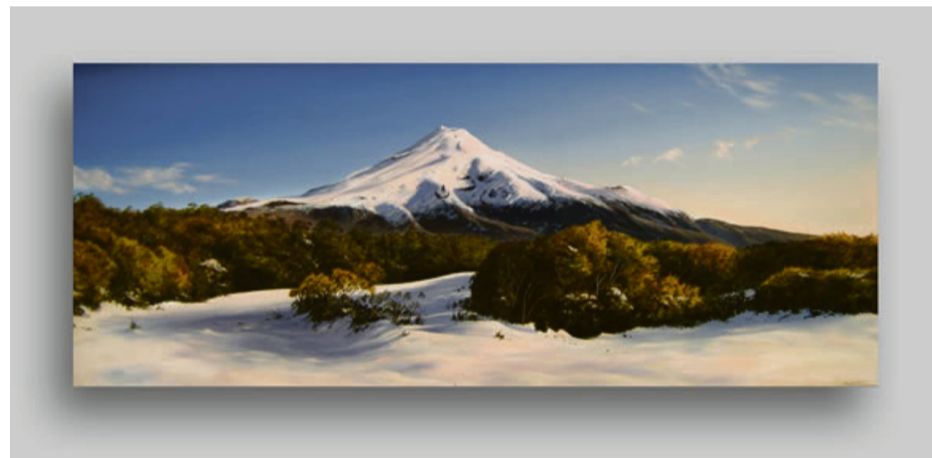
Chris White, another local favorite, has an original idea for the auction. She will donate a blank canvas for auction, as she hopes this will encourage art lovers to give her ideas on what kind of painting they'd like to purchase.

A ticket for the event includes entry to the auction, a glass of wine, a lamb main, and dessert prepared by renowned winery chef Troy

Waters. Troy is a member of the New Zealand culinary team, which represents New Zealand in culinary competitions around the world. Proceeds from the evening will benefit the Kaitake Kindergarten.

In addition to the art auction and dinner a silent auction will offer, among other prizes, jewelry, art books, and a stay at the Okurukuru Chalet accommodation.

Art on a Plate tickets are \$55 and there is a limited amount for sale. The event takes place September 21 Friday, 6.00pm-9.00pm, Okurukuru Winery, 738 Surf Highway, New Plymouth 4374. To purchase tickets, please call Kaitake Kindergarten, (06) 752 7016, or email [kaitakekindergarten@xtra.co.nz](mailto:kaitakekindergarten@xtra.co.nz).



Douglas Reid, North Egmont in afternoon sun and snow, 2011

Appearing Live

"Midge Marsden"

Sunday 23 September  
at Butlers Reef, 3pm onwards

Tickets \$30 available from Butlers Reef & Vinyl Countdown



butlersreef

For  
advertising  
phone  
(06)  
761 7016

**TOTALSPAN**  
STEEL BUILDINGS  
WHO CAN? TOTALSPAN!

"Quality and performance are vital when it comes to protecting our stock and our business. Totalspan really came to the party for us."

25 YEAR STRUCTURAL  
GUARANTEE  
5 YEAR WORKMANSHIP

0800 TOTALSPAN  
(0800 868 257)

TOTALSPAN.CO.NZ

Visit us at: 470 Devon Street  
West, New Plymouth

**DESIGNED & BUILT FOR WORK & LIFE!  
FROM CONCEPT TO COMPLETION!**



## NP band finalists in Smokefree Rockquest

Noriac, Francis Douglas Memorial College, New Plymouth, a four piece progressive metal instrumental band are in the top eight finalists of the Smokefree Rockquest. The finalists will perform on September 22 at the Founders Theatre in Hamilton.

700 bands from across the country played off in 25 regional finals from May through to August and the judges announced the top eight last month.

Petrina George from APRA, Jeff Newton from NZ on Air and Jaden Parkes from Sony Music said the standard was high, but that was no surprise given the Smokefree Rockquest pedi-

gree – with success stories such as Jesse Sheehan, Anna Mac, Jason Kerrison and Anika Moa.

Jaden Parkes, Sony Music's head of A&R, said there was potential for all the finalists to succeed in the industry: "It depends on how much they want it and how much work they are prepared to put in," he said. "They were all chosen because we thought they had potential to move on and do more with their music."

The eight national finalists are Luke and Amberly, Kamo High School, Whangarei an acoustic duo who play pop, with their own twist.

Indi, ACG Senior College,

Auckland, a singer-songwriter with music and lyrics that have already won an award.

Intone, Glendowie College, Auckland an alternative duo with a fresh and different sound.

Sunday Best, St. Peter's School, Cambridge, a quirky indie band that enjoys creating music that's infectious and makes you want to groove.

A Bit Nigel, Taupo-Nui-A-Tia College, Taupo have built on the harmonies and melodic songs that got them into the top six bands last year with a more rocky sound.

Culture Kids, Wanganui High School & Wanganui

City College play new age funk pop with a few jazzy chords in the mix to create their tight sound.

New Vinyl, Nelson College, a quirky three-piece band with a folk jazz sound and an unusual combination of instruments including double bass and piano accordion.

Guest acts at the final will include electro pop band Zowie (MTV Iggy Best New Band of 2011) and Auckland punk three-piece The Jury & The Saints.

The national final is at Founders Theatre in Hamilton on September 22 Tickets are \$10, doors open at 6.30pm for a 7pm start.

## The Singing Cowboy coming to Taranaki

The Singing Cowboy is coming to Taranaki singing in a town near you.

Jock Hume has been busking for 42 years. From Auckland, Auckland he travels the country with his guitar entertaining.

He started his interesting career in 1970.

"I found the job I really liked way back in 1970," he comments deciding to pack in his office job for a life of singing on the road. Since then he's played at a host of venues and all sorts of celebrations.

He is a country and western singer who sings the songs of such country greats as Jim Reeves, Slim Dusty and New Zealand's own John Hore Grenell - the charming Welcome to My World being a popular favourite among those he entertains, according to his publicity material.

He is also available for children's parties,



The Singing Cowboy Jock Hume with young fan.

engagements parties, 21sts, weddings, senior citizen shows, schools, coffee bars, hotels, galas and market days etc. He's also got quite a repertoire that appeals to children with old favourites

like She'll be coming round the Mountain.

Jock has been honoured for his services to show business by the Variety Artists Club of New Zealand.

Timed to coincide with

the school holidays, The Singing Cowboy will begin his Taranaki tour singing at Centre City in New Plymouth on Tuesday October 9 and Wednesday October 10. On Thursday morning October 11 he'll be in Hawera and on Friday October 12 he'll be in Opunake from mid-morning to around 2pm busking in the Opunake business district.

If anyone wants to book him in advance of his visit to Taranaki they can contact him on Auckland (09) 620 5150 or write to him on 47 Fearon Avenue, Mt Roskill, Auckland 1041.

**TO ADVERTISE HERE**  
**PH: 06 761 7016**

*Piano Recital by Breanna Morgan*  
*Sunday 30<sup>th</sup> September*

1.00pm

Opunake High School Hall

Enjoy a relaxing afternoon listening to piano music followed by a Scrumptious High Tea.

Adults \$10.00

Students \$5.00

Includes complimentary High Tea



**Come and visit our lovely Café or stay at the Lodge for Dinner, Bed and Breakfast.**

Upper Manaia Road,  
On The Mountain

**Dawson Falls**  
MOUNTAIN LODGE

Ph (06) 765 5457

**Manaia Primary School Pet Gala**

**SAT 22nd September**

Pet Judging 10am  
Stalls 11am - 2pm  
Auction

Pony Rides  
Lucky Dip  
Raffles

Special Guests

**Ginny And Rhys from 'The Block'**

**Fun Family Day Out for all**



**JSL**

Juffermans Surveyors Ltd

- >> Site Surveys
- >> Subdivisions
- >> Resource Consents
- >> Boundary Locations

79 Princes Street, Hawera  
t >> 06 278 4135  
New Plymouth >> 06 759 0904  
e >> info@juffermans.co.nz

## Coastal Singers

Present

*Celebrating 30 Years*  
DINNER SHOW

GUEST ARTIST:

URS SIGNER - CLARINET/PIANO

Opunake High School Hall  
Saturday 13th Oct 2012 - 7pm  
Tickets \$40 - BYO

The Coastal Singers new Staging is proudly supported by

TSB Community Trust 



TET CUE THEATRE PROUDLY PRESENTS

## Entertaining Angels

A comedy by RICHARD EVERETT

Directed by NICCI SMITH

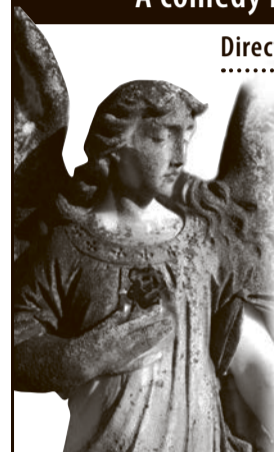
Starring Christine King, Claire Chamberlain, Catherine Jordan, Poppy Tremayne & Kevin Koch

SATURDAY 6th OCTOBER to  
SATURDAY 20th OCTOBER

Evening Performances 7.30pm  
Matinees Sundays only 2.00pm

Tickets on sale at Inglewood  
Book Centre ph 756-7032

[www.cuetheatre.co.nz](http://www.cuetheatre.co.nz)



# Young Performer of the Year

Breanna Morgan who is representing Taranaki in the Young Performer of the Year will be giving a piano recital at the Opunake High School Hall on Sunday September 30.

The concert is being held to help raise funds for the 18 year old high school student, and her teacher Elva Symons, both from Rahotu, to travel to Invercargill where Breanna will compete in the Taranaki in the Pianoforte National Young Performer of the Year on October 12-14. She was selected from the Taranaki Competitions where she had to audition in front of the Competition audience and an adjudicator.

In her final year at Opunake High School, Breanna will be playing items from the 20 minute programme she'll be performing at the national competition which consists of three pieces "of contrasting styles": a Bach prelude and fugue, a Beethoven sonata and two of three "very modern" novelettes by the lesser known French composer Francis Poulenc who lived from 1899 - 1963.

Comments Elva who has taught Breanna since she was aged 8, "They're all difficult."

Breanna who sits her ATCL



Breanna Morgan who will be giving a piano recital at the Opunake High School Hall on Sunday, September 30.

in November, will also be including in the Opunake recital pieces from her ATCL 35 minute programme as well as other items. These include a Chopin waltz, some Brahms and a piece by the French composer G Faure, also a late romantic. Breanna says she enjoys a wide range of classical and

modern music and rates her favourite composer as "probably Beethoven". She practises on average 2-3 hours a day. Elva, has been teaching Breanna since 2002 when she passed her first exam with distinction. "She's been a lovely kid to teach," says Elva. Reflecting back over

the years she adds: "We've enjoyed a musical journey together." The concert held in the Opunake High School hall will start at 1.00pm and will be followed by a "scrumptious high tea" according to the programme. The price - adults: \$10, students \$5 includes the high tea.

## Body in Action

Roll up - roll up - roll up! Don't miss the greatest show in Taranaki! The Percy Thomson Gallery is hosting 'Body in Action' until 17 October. It is another of our major exhibitions for the year funded by TET and assisted by George Mason Charitable Trust.

Developed by Te Manawa Museums Trust, Body in Action is a highly interactive exhibition which reveals how the human body works. Blood, skin, bones and brain are explained in colourful exciting ways, muscles are put to the test, senses challenged, skeletons, skin and blood investigated.

As part of this exciting journey of exploration, Body in Action also provides puzzles and problems to solve. The show revolves around a circus theme with lots of fun and games.

The gallery has had a tremendous response from schools so far and we have many bookings for class sessions. Bookings are essential for any groups visiting.

"We are looking forward to the fun and anticipate a very busy time," said Sue Morton

In the Community Gallery running concurrently will be 'Colour Me Red' ANZEG, a travelling Bernina Postbag Challenge exhibition 2012.

This year's challenge focuses on RED in all its shades, forms and meanings.

The challenge conditions:

- Entrants must design their work to fit (and travel safely) inside an A4 or A3 postbag.
- No work with glass frames will be accepted.
- Works must be able to be wall hung and entrants must provide a secure hanging system for their pieces.

•Mixed media and embroidery works are eligible. Some stitch content is required - either hand or machine embroidery.

They will be installed and remain on display until the end of Body in Action - 14 October.



Members of Kaponga School visited Body in Action at Percy Thomson Gallery recently. Teacher Susan Bryant with pupils Aidan Campbell and Ethan Ogle kept up close and personal with some smelly information.

## Coastal Singers Annual Dinner Show soon

The Coastal Singers Annual Dinner show is on Saturday 13 October at 7pm.

Tickets are \$40 and are available from Pastimes in Opunake or any choir member.

The ticket includes a three course dinner (BYO) with

choir items, solos and guest artist entertainment between courses.

This year is special. It is the choir's 30th birthday!

The celebration Dinner/Show is at the Opunake High School where the choir began 30 years ago as a night class

with 12 members. The choir struggled at times to maintain the numbers at 12, essential to keep the night class funding!

Now the choir has grown to 30 members but are always hoping for more. Anyone is welcome. Members do not have to read music just

enjoy singing! The weekly rehearsals are at the hospitality room in the Catholic Church at 7pm on Thursdays. Noeleen Moir is the Choir Mistress 06 7618127.

The choir look forward to seeing you at the Dinner/Show - celebrating 30 years.

## LITTLE SHOP OF HORRORS

Directed by Shaun Campbell

Book and Lyrics by  
Howard Ashman,  
Music by Alan Menken

Hawera Memorial Theatre  
1-10 November 2012

Tickets from South Taranaki



Phone: 06 278 8599

## WHAT'S ON AT THE GALLERY

PERCY THOMSON GALLERY



PUT YOUR BODY TO THE TEST

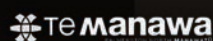
3 SEPTEMBER → 14 OCTOBER

PERCY THOMSON GALLERY

MIRANDA ST., STRATFORD (06) 765 0917

OPEN 7 DAYS FREE ENTRY

PERCYTHOMSONGALLERY.ORG.NZ



GEORGE MASON  
CHARITABLE TRUST

